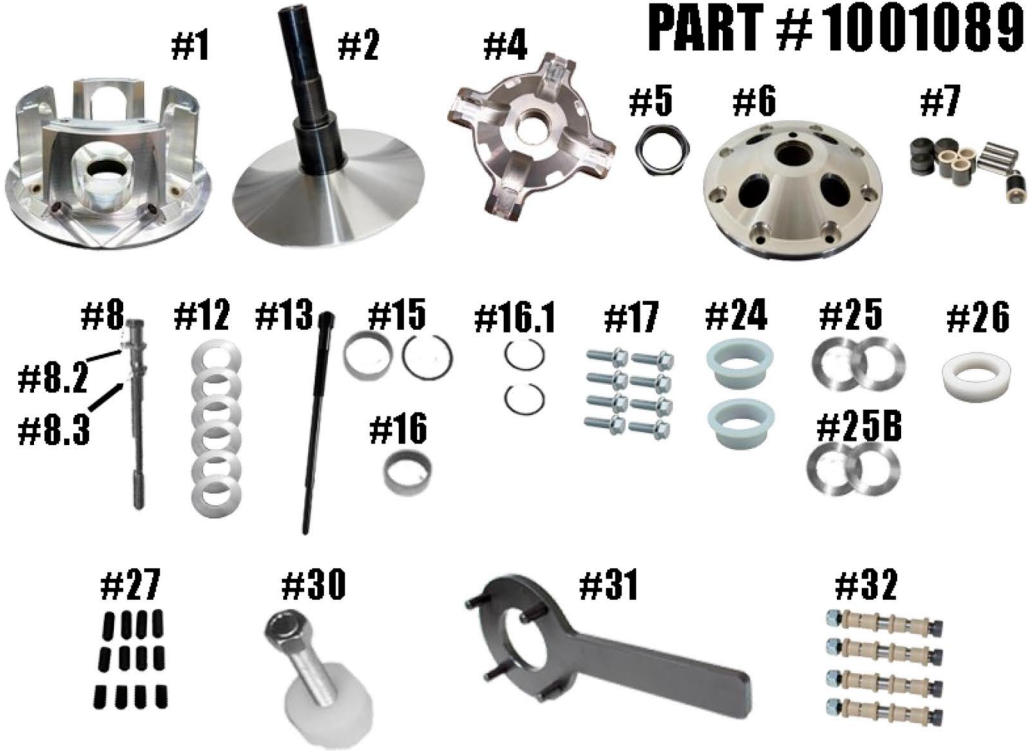


STM RAGE 4 SCREW-ON PRIMARY 30MM

PART # 1001089



ITEM#	PART #	DESCRIPTION	QTY
1	1001087	SNOWMOBILE PRIMARY RAGE 4 MOVABLE SHEAVE 30MM	1
2	1001088 / 1001083	SNOWMOBILE NON-HD PRIMARY FIXED SHEAVE AND POST ASSY 30MM	1
4	1001265	4 ARM SNOWMOBILE SPIDER (Torque to 500 ft./lbs.)	1
5	3001005	SPIDER NUT RAGE PRIMARY (Torque to 550 ft./lbs.)	1
6	1001090	SHORT BOSS RAGE 4 SNOWMOBILE PRIMARY COVER	1
7	1001651	COMPOSITE ROLLER-BUSHING STYLE PIN ROLLER FIT for RAGE 4 & 8 SPIDER NON-WIDE	1
8	PER APPLICATION	BOLT (TORQUE TO 60/75 FT/LBS)	1
8.2	PER APPLICATION	LOCK WASHER	1
8.3	PER APPLICATION	CLUTCH BOLT SPACER	1
12	1001403	30mm SCREW-ON BELT SHIM .03 THICK	6
13	PER APPLICATION	PULLER	1
15	2610 / VH181	MOVABLE BUSHING w/RETAINING CLIP	1
16	1810	COVER BUSHING	1
16.1	VH131	COVER BUSHING RETAINING CLIP	2
17	1001095	SNOWMOBILE PRIMARY 4 & 8 ARM COVER SCREW SET	1
24	1001091	TRA SPRING BUSHING	2
25	C154445	SCREW-ON SPIDER SHIM .03 THICK	2
25B	C154446	SCREW-ON SPIDER SHIM .06 THICK	2
26	1001092	SPRING SPACER for PS STYLE SPRINGS for SCREW-ON RAGE PRIMARY CLUTCH	1
27	1001094	RAGE PRIMARY CAM ARM POSITIONING ADJUSTMENT SET SCREW SET	1
30	1001122	RAGE SNOWMOBILE & UTV PRIMARY COMPRESSION TOOL 5/8"-18 (Sold Separately)	1
31	1001032	RAGE 4 & 8 SPANNER TOOL ((Sold Separately)	1
32	HIGHLIGHTED IS USED	CAM ARM PIN CONVERSION OPTIONS	4
	1001319	5/16" FIXED PIN for .570 WIDE WEIGHT	
	1001320	5/16" NON-FIXED PIN for .570 WIDE WEIGHT	
	1001321	5/16" FIXED PIN for .470 WIDE WEIGHT	
	1001322	5/16" NON-FIXED PIN for .470 WIDE WEIGHT	
	1001326	8MM FOR YAMAHA for .570 WIDE WEIGHT	

***** Please visit website for item pricing *****

STM Powersports

(248) 673-8408

www.stmpowersports.com

9/28/23