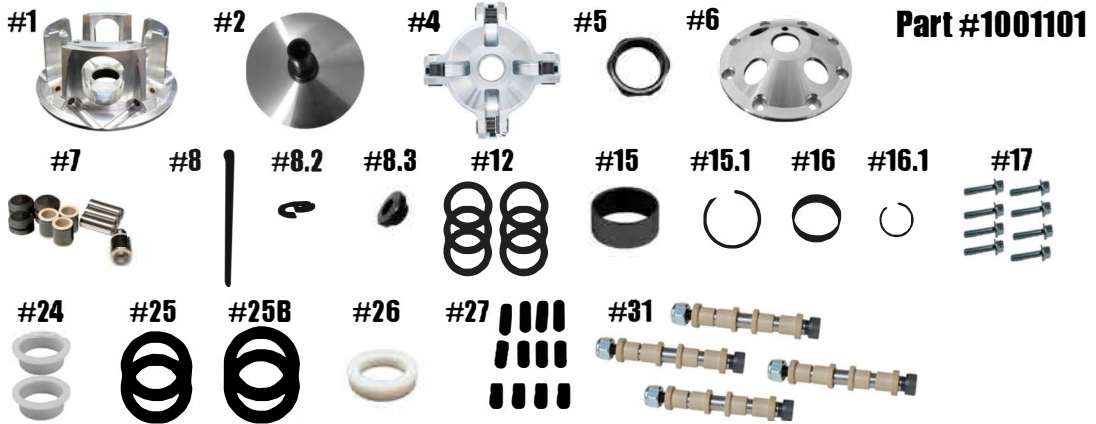
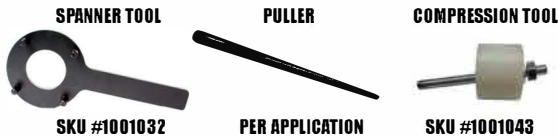


STM RAGE 4 SCREW-ON 35MM



Part #1001101

SOLD SEPERATELY



ITEM #	PART #	DESCRIPTION	QTY
1	1001096	SNOWMOBILE RAGE 4 MOVABLE SHEAVE 35mm	1
2	1001097 / 1001098	SNOWMOBILE NON-HD PRIMARY FIXED SHEAVE AND POST ASSY	1
4	1001265	4 ARM SNOWMOBILE SPIDER (TORQUE TO 500 ft/lbs.)	1
5	3001005	SPIDER NUT RAGE PRIMARY (TORQUE TO 550 ft/lbs.)	1
6	1001100	RAGE 4 LONG BOSS 35mm PRIMARY CLUTCH COVER	1
7	1001651	COMPOSITE ROLLER-BUSHING STYLE PIN ROLLER KIT for RAGE 4 & 8 SPIDER NON-WIDE	1
8	PER APPLICATION	BOLT (TORQUE TO 60/75 ft/lbs.)	1
8.2	PER APPLICATION	LOCK WASHER	1
8.3	PER APPLICATION	PRIMARY CLUTCH RETAINING WASHER	1
12	C150775	35mm SCREW-ON BELT SHIM .03 THICK (6)	6
15	2810	MOVABLE BUSHING	1
15.1	VH193	MOVABLE RETAINING CLIP	1
16	1816	COVER BUSHING	1
16.1	VH131	COVER RETAINING CLIP	1
17	1001561	SNOWMOBILE PRIMARY 4 & 8 COVER SCREW SET	1
24	1001091	TRA SPRING SPACER	2
25	C154445	SCREW-ON SPIDER SHIM .03 THICK	2
25B	C154446	SCREW-ON SPIDER SHIM .06 THICK	2
26	1001092	SPRING SPACER for PS STYLE SPRING for SCREW-ON RAGE PRIMARY CLUTCH	1
27	1001094	RAGE PRIMARY CAM ARM POSITIONING ADJUSTMENT SET SCREW SET	1
31	highlighted is used	CAM ARM PIN CONVERSION OPTIONS	4
	1001321	5/16" FIXED PIN for .470 WIDE WEIGHT	
	1001319	5/16" FIXED PIN for .570 WIDE WEIGHT	
	1001326	8MM YAMAHA for .570 WIDE WEIGHT	
	1001323	1/4" PIN for .470 WIDE WEIGHT	

*** * * Please visit website for item pricing * * ***

STM Powersports

(248) 673-8408

www.stmpowersports.com

9/22/2023