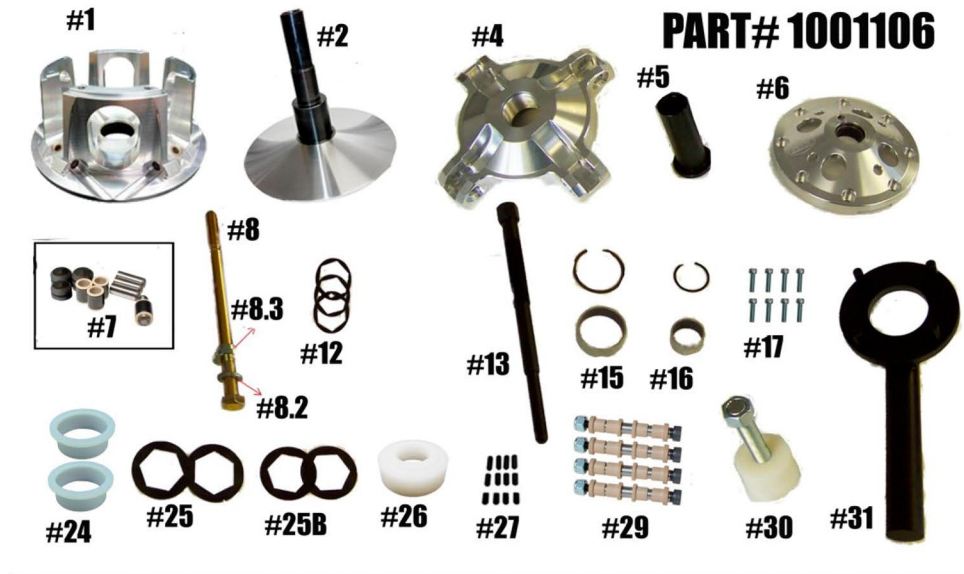


STM RAGE 4 QUICK-CHANGE 35MM



PART# 1001106

ITEM #	PART #	DESCRIPTION	QTY
1	1001096	SNOWMOBILE PRIMARY RAGE 4 MOVABLE SHEAVE 35MM	1
3	1001097 / 1001099	SNOWMOBILE NON-HD PRIMARY FIXED SHEAVE AND POST ASSY 35MM	1
4	1001102	49 CQCS RAGE 4 QUICK CHANGE SPIDER	1
5	1001104	SNOWMOBILE PRIMARY QUICK CHANGE SLEEVE HD	1
6	1001090	SHORT BOSS RAGE 4 SNOWMOBILE PRIMARY COVER	1
7	1001651	COMPOSITE ROLLER-BUSHING STYLE PIN ROLLER KIT for RAGE 4 & 8 SPIDER NON-WIDE	1
8, 8.2, 8.3	PER APPLICATION	BOLT, LOCK WASHER & CLUTCH BOLT SPACER (TORQUE TO 60 FT/LBS)	1
12	1001125	.35MM QUICK-CHANGE BELT SHIM .03 THICK	4
13	PER APPLICATION	PULLER	1
15	2810 / VH181	MOVABLE BUSHING w/ RETAINING CLIP	1
16	1810 / VH131	COVER BUSHING w/ RETAINING CLIP	1
17	1001561	SNOWMOBILE PRIMARY 4 & 8 ARM COVER SCREW SET (Torque to 125 in/lbs.)	1
24	1001091	TRA SPRING SPACER	2
25	1001129	35MM QUICK-CHANGE SPIDER SHIM .03 THICK	2
25B	1001130	35MM QUICK-CHANGESPIDER SHIM .06 THICK	2
26	1001093	SPRING SPACER for QUICK CHANGE RAGE PRIMARY CLUTCH	1
27	1001094	RAGE PRIMARY CAM ARM POSITIONING ADJUSTMENT SET SCREW SET	1
29	HIGHLIGHTED IS USED	RAGE PRIMARY CAM ARM PIN CONVERSION OPTIONS	4
	1001321	5/16" FIXED PIN for .470 WIDE WEIGHT	
	1001319	5/16" FIXED PIN for .570 WIDE WEIGHT	
	1001326	8MM YAMAHA PIN for .570 WIDE WEIGHT	
	1001323	1/4" DIAMETER PIN .470 WIDE WEIGHT	
	1001322	5/16" NON-FIXED PIN for .470 WIDE WEIGHT	
	1001320	5/16" NON-FIXED PIN for .570 WIDE WEIGHT	
30	1001122	RAGE SNOWMOBILE & UTV PRIMARY COMPRESSION TOOL 5/8"-18 (Sold Separately)	1
31	1001032	RAGE 4 & 8 SPANNER TOOL (Sold Separately)	1

****PLEASE VISIT WEBSITE FOR ITEM PRICING****

STM Powersports
(248) 673-8408

www.stmpowersports.com

9/22/2023