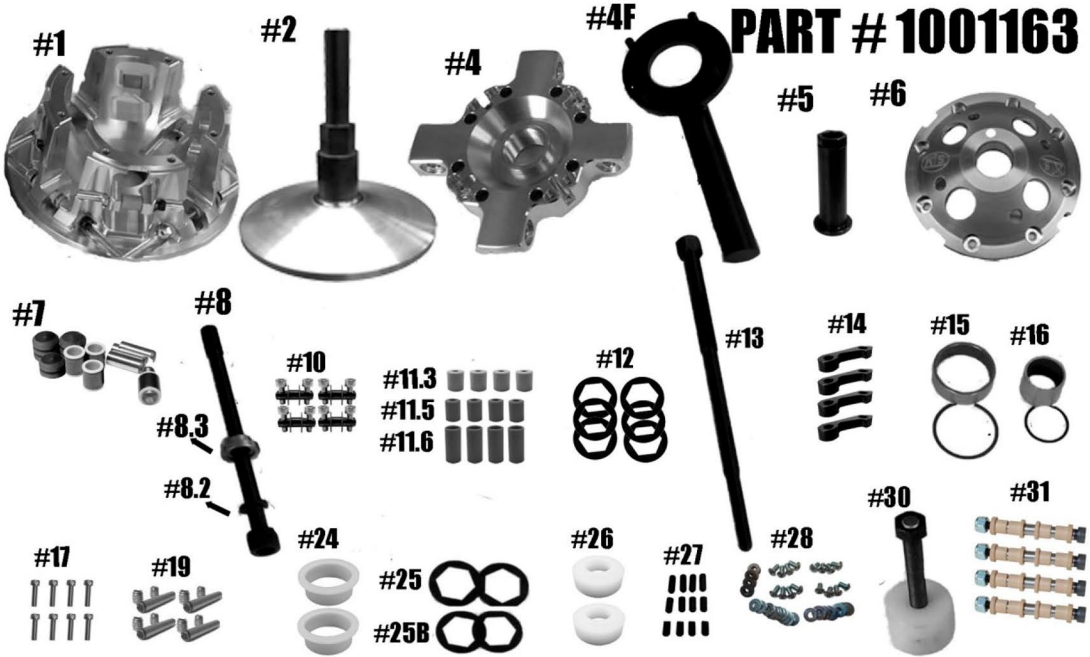


STM RAGE 8 QUICK CHANGE 35MM

PART # 1001163



ITEM#	PART#	DESCRIPTION	QTY	
1	1001117	SNOWMOBILE PRIMARY RAGE 8 MOVABLE SHEAVE	1	
2	1001097 / 1001099	SNOWMOBILE NON-HD PRIMARY FIXED SHEAVE AND POST ASSY	1	
4	1001114	RAGE 8 SNOWMOBILE QUICK-CHANGE SPIDER	1	
4F	1001032	RAGE 4 & 8 SPANNER TOOL (Sold Separately)	1	
5	1001104	SNOWMOBILE PRIMARY QUICK-CHANGE SLEEVE	1	
6	1001118	RAGE 8 PRIMARY COVER	1	
7	1001651	COMPOSITE ROLLER-BUSHING STYLE PIN ROLLER KIT FOR RAGE 4 & 8 NON-WIDE	1	
8	PER APPLICATION	CLUTCH BOLT	1	
8.2	PER APPLICATION	CLUTCH BOLT LOCK WASHER	1	
8.3	PER APPLICATION	CLUTCH BOLT SPACER	1	
10	1001023	RAGE 6 & 8 1 ST STAGE ARM PIN ASSY	4	
11.3	1001040	RAGE 8 MOVABLE ROLLER .312 SET (4)	1	
11.5	1001041	RAGE 8 MOVABLE ROLLER .500 SET (4)	1	
11.6	1001042	RAGE 8 MOVABLE ROLLER .625 SET (4)	1	
12	1001125	35MM QUICK-CHANGE BELT SHIM .03 THICK	6	
13	PER APPLICATION	PULLER	1	
14	1001024	1 ST STAGE HD M5 ARM	4	
15	2810/VH181	MOVABLE BUSHING w/ RETAINING CLIP	1	
16	1810/VH131	COVER BUSHING w/ RETAINING CLIP	1	
17	1001095	SNOWMOBILE PRIMARY 4 & 8 ARM COVER SCREW SET	1	
19	1001028	PRIMARY 1 ST STAGE ROLLER PIN ASSY	4	
24	1001091	TRA SPRING SPACER	2	
25	1001129	35MM QUICK-CHANGE SPIDER SHIM .03 THICK	2	
25B	1001130	35MM QUICK-CHANGE SPIDER SHIM .06 THICK	2	
26	1001093	SPRING SPACER for QUICK-CHANGE RAGE PRIMARY CLUTCH	1	
27	1001094	RAGE PRIMARY CAM ARM POSITIONING ADJUSTMENT SET SCREW SET	1	
28	1001006	1 ST STAGE 8 ARM M5 FASTENER KIT	1	
30	1001122	RAGE SNOWMOBILE & UTV PRIMARY COMPRESSION TOOL 5/8"-18 (Sold Separately)	1	
31		CAM ARM PIN CONVERSION KIT OPTIONS- ONLY 1 IS USED	4	
	1001321	5/16" FIXED PIN for .470 WIDE WEIGHT	1001326	8MM YAMAHA PIN for .570 WIDE WEIGHT
	1001319	5/16" FIXED PIN for .570 WIDE WEIGHT	1001323	3/4" DIAMETER for .470 WIDE WEIGHT

***** Please visit website for item pricing *****

STM Powersports

(248) 673-8408

www.stmpowersports.com

9/28/2023