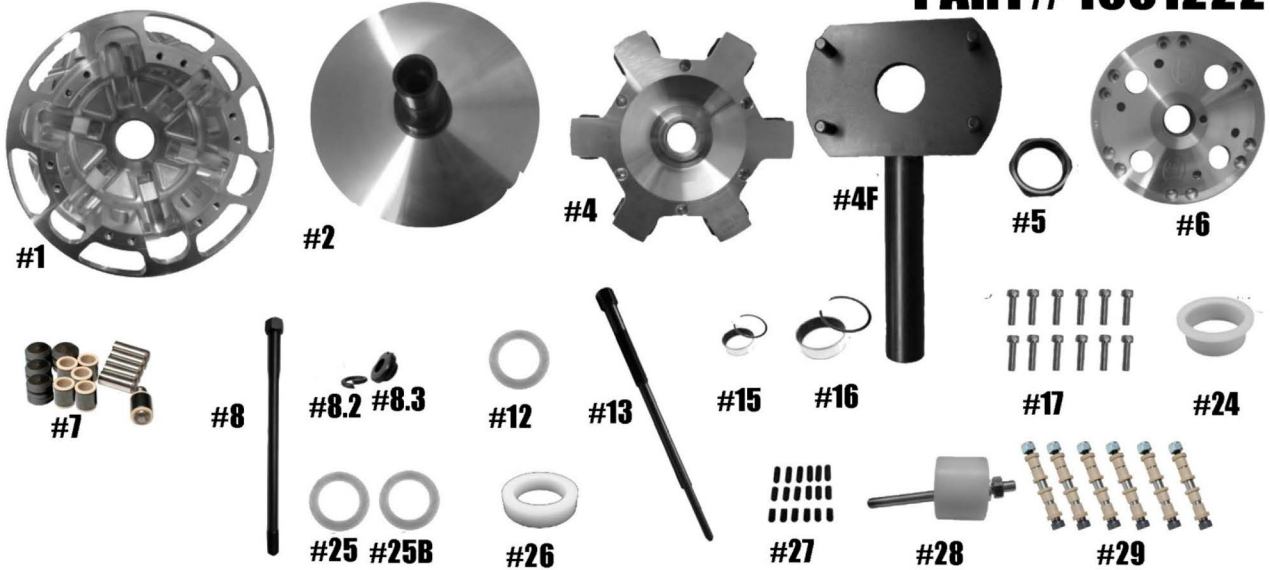


STM SINGLE STAGE RAGE 6 HD SCREW-ON 35MM

PART# 1001222



Check and make sure you have received all of the components below before proceeding.

ITEM #	PART #	DESCRIPTION	QTY
1	1001141	SINGLE-STAGE HD RAGE 6 PRIMARY CLUTCH MOVABLE SHEAVE	1
2	1001165 / 1001226	SNOWMOBILE PRIMARY HD FIXED SHEAVE AND POST ASSY 8.75"-9.5"	1
4	1001139	RAGE 6 SNOWMOBILE SINGLE-STAGE SCREW-ON HD 6 SPIDER (Torque to 500 #/lbs)	1
4F	1001069	RAGE 4, 8 & SINGLE-STAGE RAGE 6 HD SPANNER TOOL (Sold Separately)	1
5	3001005	SPIDER NUT RAGE PRIMARY (Torque to 550 #/lbs)	1
6	1001142	STM SINGLE STAGE RAGE 6 HD SNOWMOBILE PRIMARY COVER	1
7	1001668	SINGLE-STAGE RAGE 6 COMPOSITE .610 ROLLER-BUSHING STYLE PIN ROLLER KIT	1
8	PER APPLICATION	BOLT	1
8.2	PER APPLICATION	LOCK WASHER	1
8.3	PER APPLICATION	CLUTCH BOLT SPACER	1
12	1001402	BELT SHIM .03 THICK for 1.875" DIAMETER POST	4
13	PER APPLICATION	PULLER	1
15	3012 / VH216	MOVABLE BUSHING w/ RETAINING CLIP	1
16	1810 / VH131	COVER BUSHING w/ RETAINING CLIP	1
17	1001221	PNEUMATIC SINGLE-STAGE RAGE 6 COVER SCREW SET (12)	1
24	1001091	TRA SPRING SPACER	2
25	C152994	SCREW-ON HD SPIDER SHIM .03 THICK for 1.875" DIAMETER POST	2
25B	C166597	SCREW-ON HD SPIDER SHIM .06 THICK for 1.875" DIAMETER POST	2
26	1001092	SPRING SPACER for PS STYLE SPRINGS for SCREW-ON RAGE PRIMARY CLUTCH	1
27	1001227	RAGE PRIMARY SINGLE-STAGE RAGE 6 CAM ARM POSITIONING ADJUSTMENT SET SCREW SET	1
28	1001043	RAGE ATV PRIMARY COMPRESSION TOOL M14-1.5 (Sold Separately)	1
29		CAM ARM PIN CONVERSION OPTIONS	6
	1001321	5/16" FIXED PIN for .470 WIDE WEIGHT	
	1001319	5/16" FIXED PIN for .570 WIDE WEIGHT	
	1001326	8MM YAMAHA PIN for .570 WIDE WEIGHT	
	1001323	1/4" DIAMETER PIN for .470 WIDE WEIGHT	

WARNING: ENGAGING CLUTCH WITHOUT A BELT INSTALLED WILL CAUSE CAM ARM DAMAGE OR BREAKAGE TORQUE CLUTCH BOLT TO CRANK AND START ENGINE. SLOWLY REV ENGINE TO 5000 RPM WITH BELT INSTALLED AND NO LOAD ON DRIVE TRAIN. SHUT OFF ENGINE AND RETORQUE CLUTCH BOLT. PERIODICALLY CHECK TORQUE SPEC AFTER FIRST RUNS. NEVER RUN CLUTCHES WITHOUT THE SAFETY CLUTCH COVER INSTALLED.