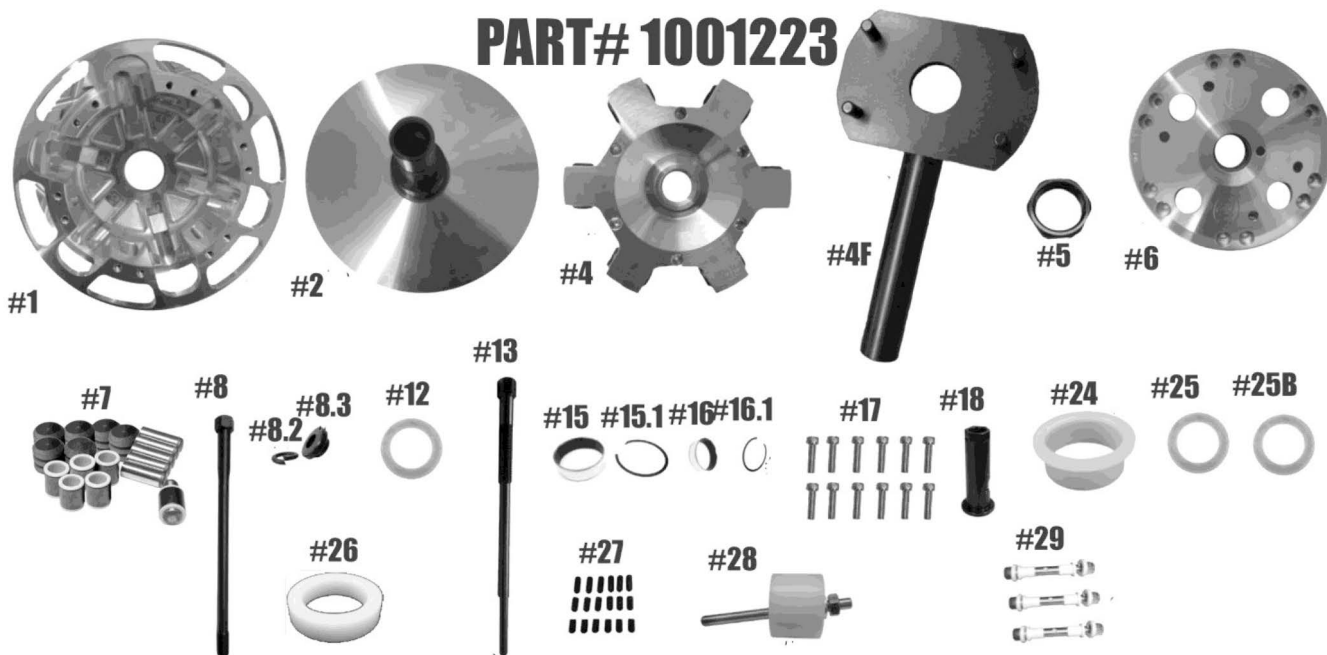


# STM SINGLE STAGE RAGE 6 HD QUICK CHANGE 35MM

## PART# 1001223



**Check and make sure you have received all of the components below before proceeding**

ITEM #	PART #	DESCRIPTION	QTY
1	1001141	SINGLE-STAGE HD RAGE 6 PRIMARY CLUTCH MOVABLE SHEAVE	1
2	1001097 / 1001098	SNOWMOBILE NON-HD PRIMARY FIXED SHEAVE AND POST ASSY	1
4	1001139	RAGE 6 SINGLE-STAGE SCREW-ON HD SPIDER-Torque to 500 ft./lbs.	1
4F	1001069	RAGE 4, 8 & SINGLE-STAGE RAGE 6 HD SPANNER TOOL (Sold Separately)	1
5	3001005	SPIDER NUT RAGE PRIMARY-Torque to 550 ft./lbs.	1
6	1001142	SINGLE-STAGE RAGE 6 HD SNOWMOBILE PRIMARY COVER	1
7	1001546	COMPOSITE ROLLER-BUSHING STYLE PIN ROLLER KIT for RAGE 3 & 6	2
8	PER APPLICATION	BOLT	1
8.2	PER APPLICATION	LOCK WASHER	1
8.3	PER APPLICATION	CLUTCH BOLT SPACER	1
12	1001127	35MM QUICK-CHANGE BELT SHIM .03 THICK	4
13	PER APPLICATION	PULLER	1
15	3012.620	MOVABLE BUSHING	1
15.1	VH225	MOVABLE RETAINING CLIP	1
16	1816	COVER BUSHING	1
16.1	VH131	COVER RETAINING CLIP	1
17	1001221	PNEUMATIC SINGE-STAGE RAGE 6 COVER SCREW SET (12)	1
18	1001104	SNOWMOBILE PRIMARY CLUTCH QUICK-CHANGE SLEEVE HD	1
24	1001091	TRA SPRING SPACER	2
25	1001133	HD QUICK-CHANGE SPIDER SHIM .03 THICK	2
25B	1001134	HD QUICK-CHANGE SPIDER SHIM .06 THICK	2
26	1001092	SPRING SPACER for PS STYLE SPRINGS for SCREW-ON RAGE PRIMARY CLUTCH	1
27	1001227	RAGE PRIMARY SINGE-STAGE RAGE 6 CAM ARM POSITIONING ADJUSTMENT SET SCREW SET	1
28	1001122	COMPRESSION TOOL 5/8"-18 (Sold Separately)	1
29		CAM ARM PIN CONVERSION OPTIONS	3
	1001321	5/16" FIXED PIN for .470 WIDE WEIGHT	
	1001319	5/16" FIXED PIN for .570 WIDE WEIGHT	
	1001326	8MM YAMAHA PIN for .570 WIDE WEIGHT	
	1001323	1/4" DIAMETER PIN for.470 WIDE WEIGHT	

**WARNING: ENGAGING CLUTCH WITHOUT A BELT INSTALLED WILL CAUSE CAM ARM DAMAGE OR BREAKAGE TORQUE CLUTCH BOLT TO CRANK AND START ENGINE. SLOWLY REV ENGINE TO 5000 RPM WITH BELT INSTALLED AND NO LOAD ON DRIVE TRAIN. SHUT OFF ENGINE AND RETORQUE CLUTCH BOLT. PERIODICALLY CHECK TORQUE SPEC AFTER FIRST RUNS. NEVER RUN CLUTCHES WITHOUT THE SAFETY CLUTCH COVER INSTALLED.**

STM Powersports  
(248) 673-8408

[www.stmpowersports.com](http://www.stmpowersports.com)

9/27/2023