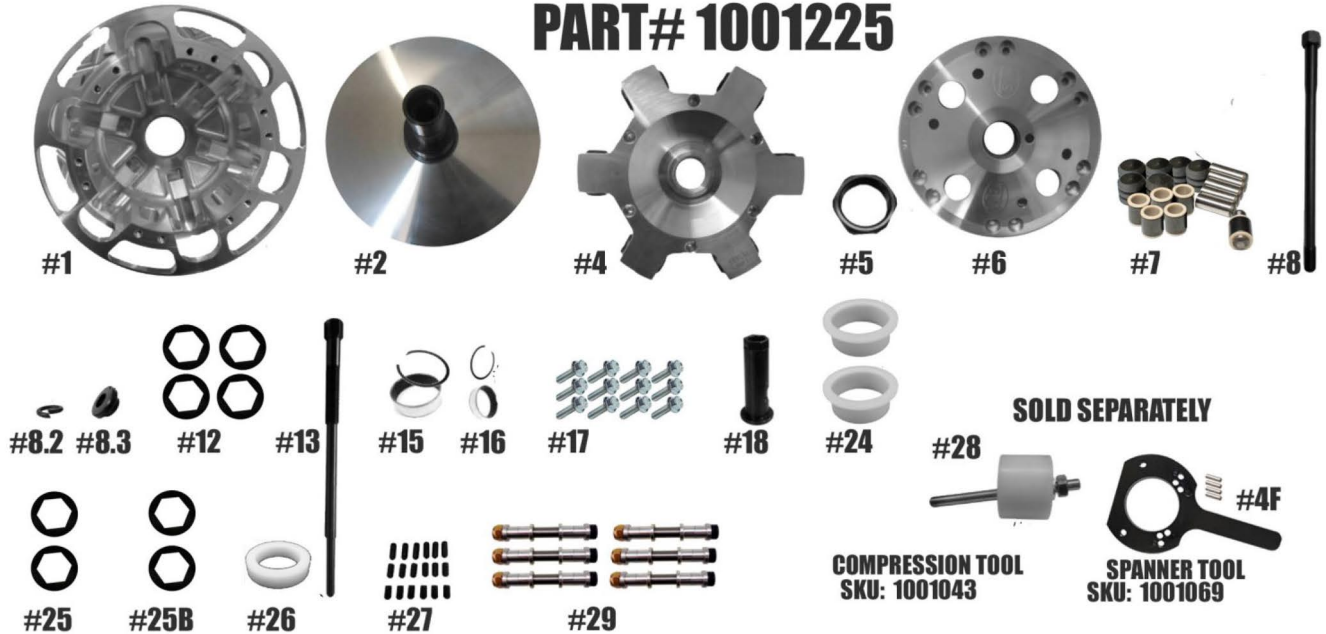


# STM SINGLE STAGE RAGE 6 HD QUICK CHANGE 30MM

## PART# 1001225



**SOLD SEPARATELY**

**COMPRESSION TOOL  
SKU: 1001043**

**SPANNER TOOL  
SKU: 1001069**

**Check and make sure you have received all of the components below before proceeding.**

ITEM #	PART #	DESCRIPTION	QTY
1	1001218	SINGLE-STAGE HD RAGE 6 PRIMARY CLUTCH MOVABLE SHEAVE	1
2	1001120 / 1001083	SNOWMOBILE PRIMARY HD FIXED SHEAVE AND POST ASSY 8.75"-9.5"	1
4	1001140	RAGE 6 SNOWMOBILE SINGLE-STAGE QUICK CHANGE HD SPIDER (torque to 500 ft/lbs.)	1
4F	1001069	RAGE 4,8 & SINGLE-STAGE RAGE 6 HD SPANNER TOOL (Sold Separately)	1
5	3001005	SPIDER NUT RAGE PRIMARY (Torque to 550 ft/lbs.)	1
6	1001142	SINGLE-STAGE RAGE 6 HD SNOWMOBILE PRIMARY COVER	1
7	1001546	COMPOSITE ROLLER-BUSHING STYLE PIN ROLLER KIT FOR RAGE 3 & 6 SPIDER	2
8	PER APPLICATION	BOLT	1
8.2	PER APPLICATION	LOCK WASHER	1
8.3	PER APPLICATION	CLUTCH BOLT SPACER	1
12	1001123	30MM QUICK-CHANGE BELT SHIM .03 THICK	4
13	PER APPLICATION	PULLER	1
15	2610/VH181	MOVABLE BUSHING w/RETAINING CLIP	1
16	1816/VH131	COVER BUSHING w/RETAINING CLIP	1
17	1001221	PNEUMATIC SINGLE-STAGE RAGE 6 COVER SCREW SET (12)	1
18	1001103	SNOWMOBILE PRIMARY CLUTCH QUICK-CHANGE SLEEVE	1
24	1001091	TRA SPRING SPACER	2
25	1001133	HD QUICK-CHANGE SPIDER SHIM .03 THICK	2
25B	1001134	HD QUICK-CHANGE SPIDER SHIM .06 THICK	2
26	1001092	SPRING SPACER for PS STYLE SPRINGS for SCREW-ON RAGE PRIMARY CLUTCH	1
27	1001227	RAGE PRIMARY SINGLE-STAGE RAGE 6 CAM ARM POSITIONING ADJUSTMENT SET SCREW SET	1
28	1001043	RAGE ATV PRIMARY COMPRESSION TOOL M14-1.5 (Sold Separately)	1
29	Highlighted is used	CAM ARM PIN CONVERSION OPTIONS	6
	1001321	5/16" FIXED PIN for .470 WIDE WEIGHT	
	1001319	5/16" FIXED PIN for .570 WIDE WEIGHT	
	1001326	8MM YAMAHA PIN for .570 WIDE WEIGHT	
	1001323	3/4" DIAMETER PIN for .470 WIDE WEIGHT	

**WARNING: Engaging clutch without a belt installed will cause cam arm damage or breakage. Torque clutch bolt to crank and start engine. Slowly rev engine to 5000 RPM with belt installed and no load on drive train. Shut off engine and retorque clutch bolt. Periodically check torque spec after first runs. Never run the clutch without the safety clutch cover installed.**