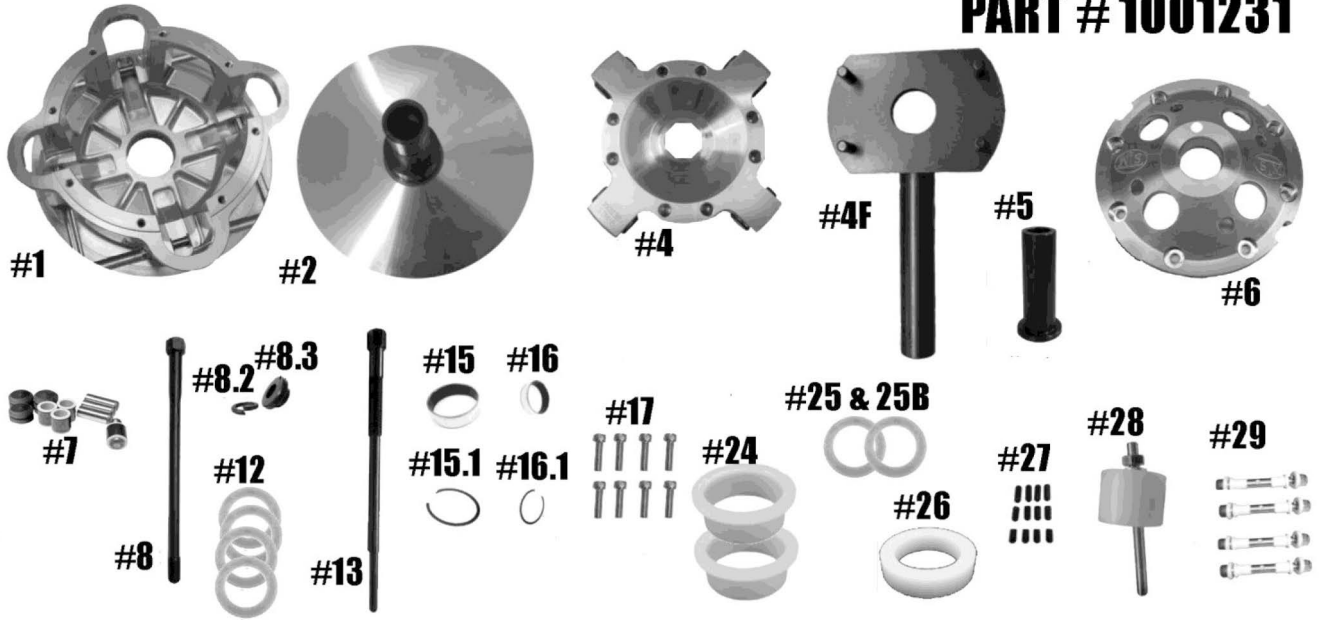


STM RAGE 4 HD QUICK CHANGE 30MM

PART # 1001231



Check and make sure you have received all of the components below before proceeding

ITEM #	PART #	DESCRIPTION	QTY
1	1001249	RAGE 4 HD PRIMARY CLUTCH MOVABLE SHEAVE	1
2	1001120 / 1001086	SNOWMOBILE PRIMARY HD FIXED SHEAVE AND POST ASSY	1
4	1001137	RAGE 4 QUICK CHANGE HD SPIDER	1
4F	1001069	RAGE 4,8 & SS RAGE 6 HD SPANNER TOOL (Sold Separately)	1
5	1001103	SNOWMOBILE PRIMARY CLUTCH QUICK-CHANGE SLEEVE	1
6	1001037	RAGE 4 & 8 LONG BOSS HD PRIMARY CLUTCH COVER	1
7	1001651	COMPOSITE ROLLER-BUSHING STYLE PIN ROLLER KIT for RAGE 4 & 8 SPIDER NON-WIDE	1
8	PER APPLICATION	BOLT (TORQUE TO 60 FT./LBS)	1
8.2	PER APPLICATION	LOCK WASHER	1
8.3	PER APPLICATION	CLUTCH BOLT SPACER	1
12	1001123	30MM QUICK CHANGE BELT SHIM .03 THICK	4
13	PER APPLICATION	PULLER (Sold Separately)	1
15	2610	MOVABLE BUSHING	1
15.1	VH181	MOVABLE RETAINING CLIP	1
16	1810	COVER BUSHING	1
16.1	VH131	COVER RETAINING CLIP	1
17	1001095	SNOWMOBILE PRIMARY 4 & 8 ARM COVER SCREW SET (6) (Torque to 105 ft./lbs)	1
24	1001091	TRA SPRING SPACER	2
25	1001131	QUICK CHANGE SPIDER SHIM .03 THICK	2
25B	1001132	QUICK CHANGE SPIDER SHIM .06 THICK	2
26	1001093	SPRING SPACER for QUICK CHANGE RAGE PRIMARY CLUTCH	1
27	1001094	RAGE PRIMARY CAM ARM POSITIONING ADJUSTMENT SET SCREW SET	1
28	1001122	RAGE SNOWMOBILE & UTV PRIMARY COMPRESSION TOOL 5/8"-18 (Sold Separately)	1
29		CAM ARM PIN CONVERSION PIN OPTIONS	4
	1001321	5/16" FIXED PIN for .470 WIDE WEIGHT	
	1001319	5/16" FIXED PIN for .570 WIDE WEIGHT	
	1001326	8MM YAMAHA PIN for .570 WIDE WEIGHT	
	1001323	1/4" DIAMETER PIN for .470 WIDE WEIGHT	

WARNING: Engaging clutch without a belt installed will cause cam arm damage or breakage. Torque clutch bolt to crank and start engine. Slowly rev engine to 5000 RPM with belt installed and no load on drive train. Shut off engine and re-torque clutch bolt. Periodically check torque spec after first runs. Never run the clutch without the safety clutch cover installed.