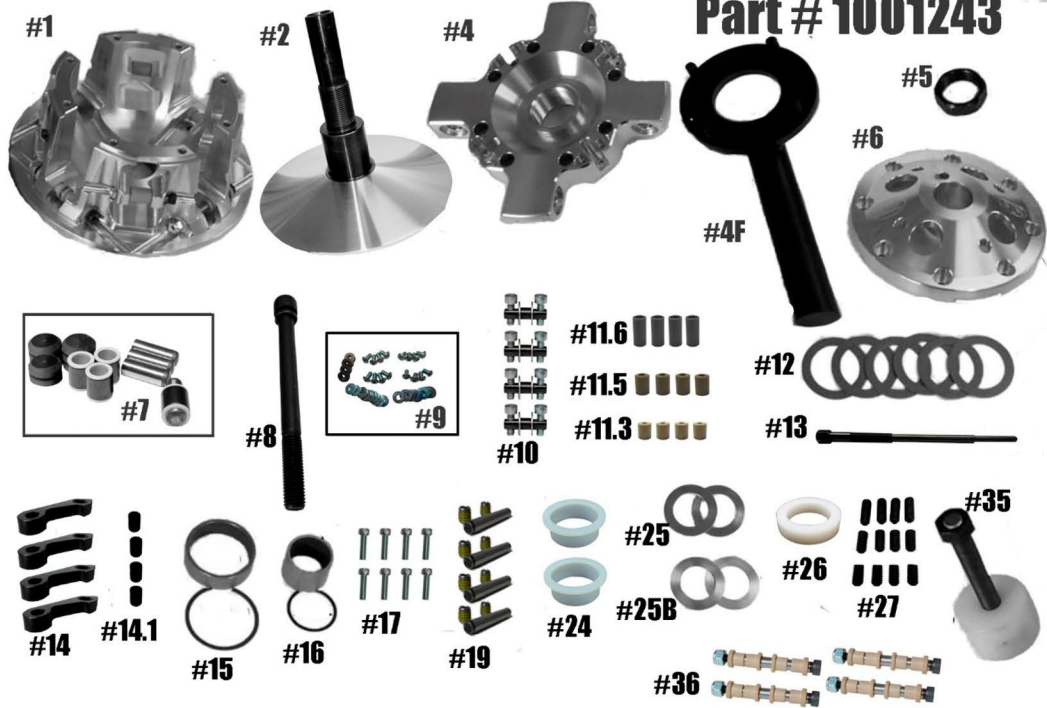


STM RAGE 8 SCREW-ON 35MM POST (1.75 DIA.)

Part # 1001243



ITEM#	PART#	DESCRIPTION	QTY
1	1001117	SNOWMOBILE PRIMARY RAGE 8 MOVABLE SHEAVE	1
2	1001097/1001098	SNOWMOBILE NON-HD PRIMARY FIXED SHEAVE & POST ASSY	1
4	1001264	RAGE 8 SCREW-ON SPIDER (Torque to 500 ft/lbs.)	1
4F	1001032	RAGE 4 & 8 SPANNER TOOL (Sold Separately)	1
5	3001005	SPIDER NUT RAGE PRIMARY (Torque to 550 ft/lbs.)	1
6	1001339	RAGE 8 LONG BOSS STANDARD PRIMARY CLUTCH COVER	1
7	1001651	COMPOSITE ROLLER-BUSHING STYLE PIN ROLLER KIT for RAGE 4 & 8 NON-WIDE	1
8	STOCK BOLT	CLUTCH BOLT (Torque to 60-75 ft/lbs.)	1
9	1001006	1 ST STAGE 8 ARM M5 FASTENER KIT	1
10	1001023	RAGE 6 & 8 1 ST STAGE ARM PIN ASSY	4
11.3	1001040	RAGE 8 MOVABLE ROLLER .312	4
11.5	1001041	RAGE 8 MOVABLE ROLLER .500	4
11.6	1001042	RAGE 8 MOVABLE ROLLER .625	4
12	C150775	35MM SCREW-ON BELT SHIM .03 THICK (6)	1
13	PER APPLICATION	PULLER	1
14	1001024	1 ST STAGE HD M5 ARM	4
14.1	1001330	1 ST STAGE ARM BUSHING	4

ITEM#	PART#	DESCRIPTION	QTY
15	2810 w/VH193	MOVABLE BUSHING w/RETAINING CLIP	1
16	1816 w/VH131	COVER BUSHING w/RETAINING CLIP	1
17	1001561	COVER SCREW SET (Torque to 125 in/lbs.)	1
19	1001028	PRIMARY 1 ST STAGE ROLLER PIN ASSY	4
24	1001091	TRA SPRING SPACER	2
25	C154445	SCREW-ON SPIDER SHIM .03 THICK	2
25B	C154446	SCREW-ON SPIDER SHIM .06 THICK	2
26	1001092	SPRING SPACER for PS STYLE SPRINGS for SCREW-ON RAGE PRIMARY CLUTCH	1
27	1001094	RAGE PRIMARY CAM ARM POSITIONING ADJUSTMENT SET SCREW SET	1
35	1001043	RAGE ATV PRIMARY COMPRESSION TOOL M14X1.5 (Sold Separately)	1
36	HIGHLIGHTED IS USED	CAM ARM PIN CONVERSION OPTIONS	4
	1001321	5/16" FIXED PIN for .470 WIDE WEIGHT	
	1001319	5/16" FIXED PIN for .570 WIDE WEIGHT	
	1001326	8MM YAMAHA PIN for .570 WIDE WEIGHT	
	1001323	1/4" DIAMETER PIN for .470 WIDE WEIGHT	
	1001322	5/16" NON-FIXED PIN for .470 WIDE WEIGHT	
	1001320	5/16" NON-FIXED PIN for .570 WIDE WEIGHT	

*** PLEASE VISIT WEBSITE FOR ITEM PRICING ***

STM Powersports
(248) 673-8408

www.stmpowersports.com

9/28/2023