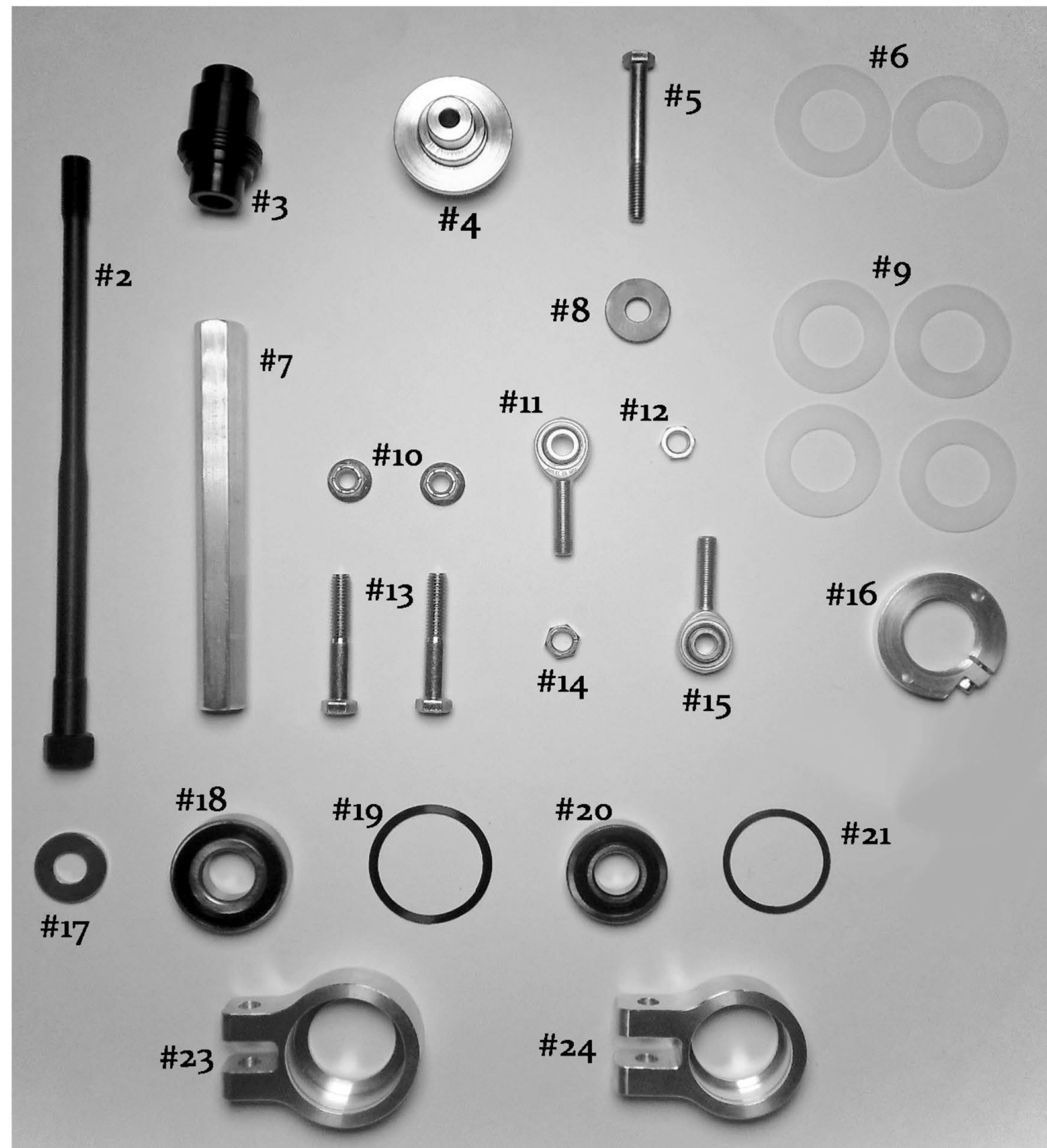


STM Powersports

Tied clutch brace

**STM QC, HD & Standard 30-33mm and
Ski-Doo Primary Part# 1001259**



FOR DRAG RACING APPLICATIONS ONLY

Item #	Quantity	Description	Part Number
2	1	Primary clutch bolt & lock washer	Per application
3	1	QC 30mm Adjuster Base	1001255
4	1	Secondary Bearing Post	Per application
5	1	Secondary Retaining Bolt & lock washer	Per application
6	2	.030 Shim	1001173
7	1	Adjustable Rod Eye Arm	
		10.5" Center to Center	1001188
		11.5" Center to Center	1001161
		12.5" Center to Center	1001186
		12.25" Center to Center	1001187
8	1	Secondary Retaining Washer for M10 Bolt	1001219
	or	For M8 Bolt	1001217
9	4	.060 Shim	1001172
10	2	Flanged Nyloc Nut For Rod Eye to Bearing Carrier Bolt	3/8-16
11	1	Right Handed Rod Eye	1001181
12	1	Right Handed Rod Eye Jam Nut	3/8-24RH
13	2	Rod Eye to Bearing Carrier Bolt	3/8-16x2 1/4
14	1	Left Handed Rod Eye Jam Nut	3/8-24 LH
15	1	Left Handed Rod Eye	1001182
16	1	Belt Spacing Adjuster Nut	1001171
17	1	Primary Bolt Retaining Washer	1001180
18	1	Primary Post Bearing	1001469
19	1	Primary Post Bearing Retaining Snap Ring	91985A251
20	1	Secondary Post Bearing	1001470
21	1	Secondary Post Bearing Retaining Snap Ring	91985A231
23	1	Primary Post Bearing Carrier	1001159
24	1	Secondary Post Bearing Carrier	1001160

STM Powersports
(248) 673-8408

www.stmpowersports.com

1/18/17

STM Powersports
(248) 673-8408

www.stmpowersports.com

1/18/17