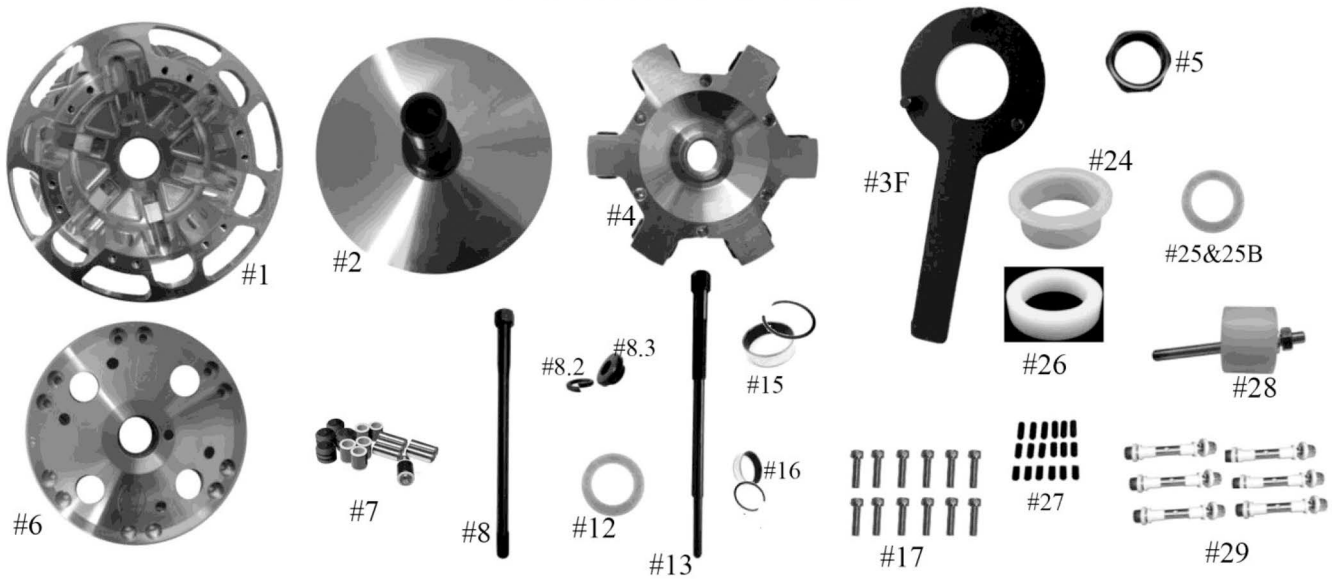


STM SINGLE STAGE RAGE 6 SCREW-ON 35MM

PART NUMBER 1001302



Check and make sure you have received all of the components below before proceeding

ITEM #	PART #	DESCRIPTION	QTY
1	1001305	SINGLE-STAGE RAGE 6 PRIMARY CLUTCH MOVABLE SHEAVE (NON-HD)	1
2	1001097/ 1001098	SNOWMOBILE NON-HD PRIMARY FIXED SHEAVE AND POST ASSY	1
3F	1001020	RAGE 3 & 6 SPIDER TOOL (SOLD SEPARATELY)	1
4	1001258	RAGE 6 SNOWMOBILE SINGLE-STAGE SCREW-ON SPIDER (NON-HD) (TORQUE TO 500 FT/LBS)	1
5	3001005	SPIDER NUT RAGE PRIMARY (TORQUE TO 550 FT/LBS)	1
6	1001257	SINGLE-STAGE RAGE 6 NON-HD SNOWMOBILE PRIMARY COVER	1
7	1001635	SINGLE-STAGE RAGE 6 COMPOSITE ROLLER-BUSHING STYLE PIN ROLLER KIT	1
8	PER APPLICATION	PRIMARY RETAINING BOLT (TORQUE TO 60 FT/LBS)	1
8.2	PER APPLICATION	LOCK WASHER	1
8.3	PER APPLICATION	CLUTCH BOLT SPACER	1
12	C150775	35mm SCREW-ON BELT SHIM .03 THICK	1
13	1001346	ARCTIC CAT 35mm 4-STROKE & CROSSFIRE PRIMARY CLUTCH PULLER	1
15	2810 / VH193	MOVABLE BUSHING w/RETAINING CLIP	1
16	1810 / VH131	COVER BUSHING w/RETAINING CLIP	1
17	1001221	PNEUMATIC SINGLE-STAGE RAGE 6 COVER SCREW SET (12) (TORQUE TO 125 IN/LBS)	1
24	1001091	TRA SPRING SPACER	2
25	C154445	SCREW-ON SPIDER SHIM .03 THICK	2
25B	C154446	SCREW-ON SPIDER SHIM .06 THICK	2
26	1001092	SPRING SPACER for PS STYLE SPRINGS for SCREW-ON RAGE PRIMARY CLUTCH	1
27	1001227	RAGE PRIMARY SINGLE-STAGE RAGE 6 CAM ARM POSITIONING ADJUSTMENT SET SCREW SET	1
28	1001043	COMPRESSION TOOL M14-1.5 (SOLD SEPARATELY)	1
29	Highlighted is used	CAM ARM PIN CONVERSION OPTIONS	6
	1001321	5/16" FIXED PIN for .470 WIDE WEIGHT	
	1001319	5/16" FIXED PIN for .570 WIDE WEIGHT	
	1001326	8MM YAMAHA PIN for .570 WIDE WEIGHT	
	1001323	1/4" DIAMETER PIN for .470 WIDE WEIGHT	

WARNING: Engaging clutch without a belt installed will cause cam arm damage or breakage. Torque clutch bolt to crank and start engine. Slowly rev engine to 5000 RPM with belt installed and no load on drive train. Shut off engine and retorque clutch bolt. Periodically check torque spec after first runs. Never run clutches without the safety clutch cover installed.