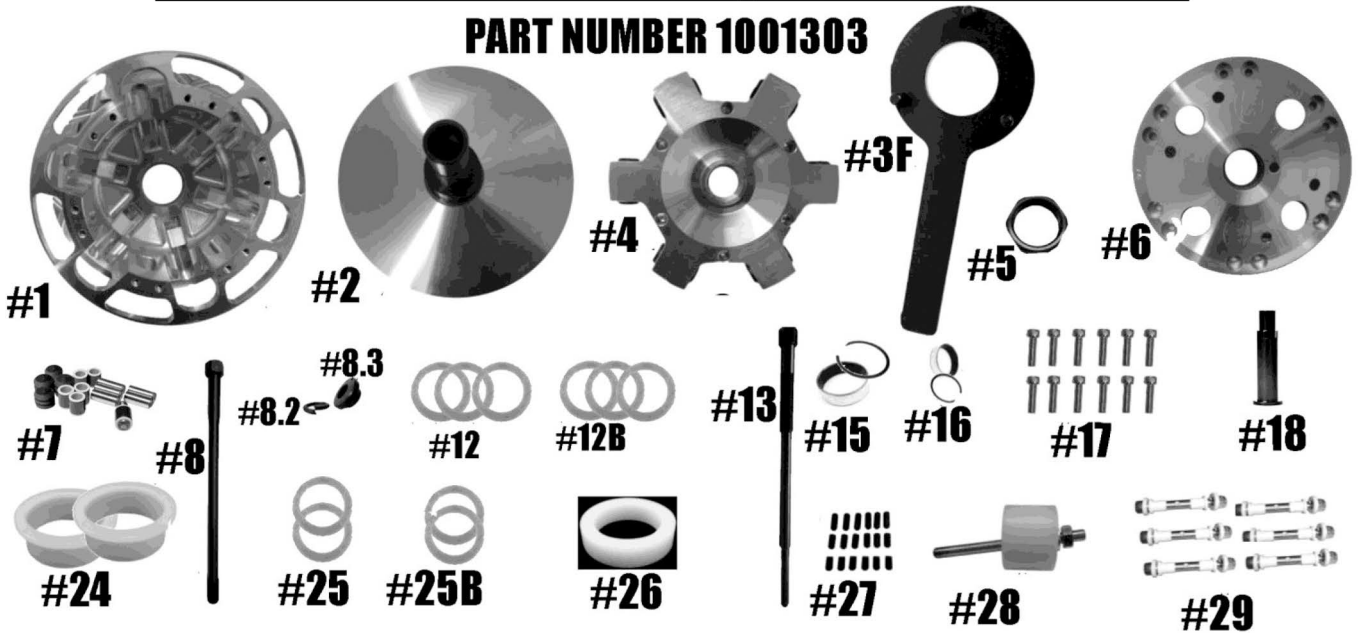


STM SINGLE-STAGE RAGE 6 QUICK CHANGE 30MM

PART NUMBER 1001303



Check and make sure you have received all of the components below before proceeding.

ITEM #	PART #	DESCRIPTION	QTY
1	1001256	SINGLE-STAGE RAGE 6 PRIMARY CLUTCH MOVABLE SHEAVE (NON-HD)	1
2	1001088/ 1001086	SNOWMOBILE NON-HD PRIMARY FIXED SHEAVE AND POST ASSY	1
3F	1001020	RAGE 3 & 6 SPIDER TOOL (SOLD SEPARATELY)	1
4	1001275	RAGE 6 SNOWMOBILE SINGLE-STAGE QUICK-CHANGE SPIDER (TORQUE TO 500 FT/LBS)	1
5	3001005	SPIDER NUT RAGE PRIMARY (TORQUE TO 550 FT/LBS)	1
6	1001257	SINGLE-STAGE RAGE 6 NON-HD SNOWMOBILE PRIMARY COVER	1
7	1001635	SINGLE-STAGE RAGE 6 COMPOSITE ROLLER-BUSHING STYLE PIN ROLLER KIT	1
8	PER APPLICATION	BOLT (Torque to 60 ft./lbs.)	1
8.2	PER APPLICATION	LOCK WASHER	1
8.3	PER APPLICATION	CLUTCH BOLT SPACER	1
12	1001123	30MM QUICK-CHANGE BELT SHIM .03 THICK	4
13	PER APPLICATION	PULLER	1
15	2610 / VH181	MOVABLE BUSHING w/RETAINING CLIP	1
16	1810 VH131	COVER BUSHING w/ RETAINING CLIP	1
17	1001221	PNEUMATIC SINGLE-STAGE RAGE 6 COVER SCREW SET (12)	1
18	1001103	SNOWMOBILE PRIMARY CLUTCH QUICK-CHANGE SLEEVE	1
24	1001091	TRA SPRING SPACER	2
25	1001131	QUICK-CHANGE SPIDER SHIM .03 THICK	2
25B	1001132	QUICK-CHANGE SPIDER SHIM .06 THICK	2
26	1001093	SPRING SPACER for QUICK-CHANGE RAGE PRIMARY CLUTCH	1
27	1001227	RAGE PRIMARY SINGLE-STAGE RAGE 6 CAM ARM POSITIONING ADJUSTMENT SET SCREW SET	1
28	1001122	RAGE SNOWMOBILE & UTV COMPRESSION TOOL 5/8"-18 (SOLD SEPARATELY)	1
29		CAM ARM PIN CONVERSION OPTIONS	3
	1001321	5/16" FIXED PIN for .470 WIDE WEIGHT	
	1001319	5/16" FIXED PIN for .570 WIDE WEIGHT	
	1001326	8MM YAMAHA PIN for .570 WIDE WEIGHT	
	1001323	1/4" DIAMETER PIN for .470 WIDE WEIGHT	

WARNING: Engaging clutch without a belt installed will cause cam arm damage or breakage. Torque clutch bolt to crank and start engine. Slowly rev engine to 5000 RPM with belt installed and no load on drive train. Shut off engine and retorque clutch bolt. Periodically check torque spec after first runs. Never run the clutch without the safety clutch cover installed.