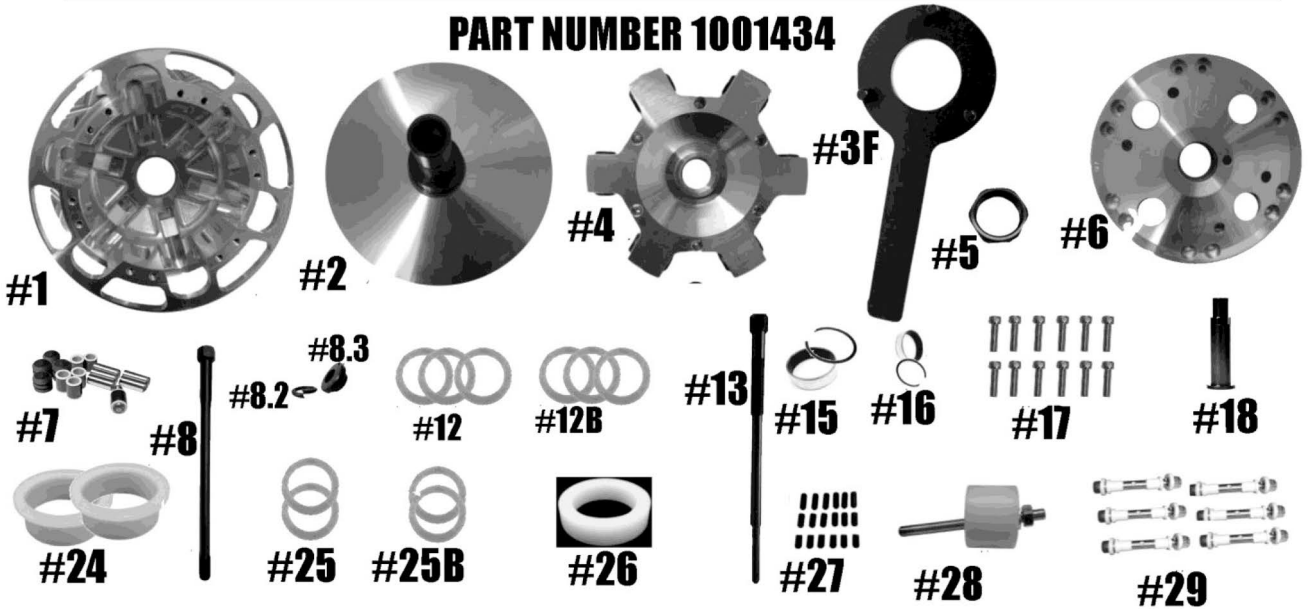


# STM SINGLE STAGE RAGE 6 QUICK CHANGE 35MM

**PART NUMBER 1001434**



**Check and make sure you have received all the components below before proceeding.**

ITEM #	PART #	DESCRIPTION	QTY
1	1001305	SINGLE-STAGE RAGE 6 PRIMARY CLUTCH MOVABLE SHEAVE (NON-HD)	1
2	1001097/ 1001099	SNOWMOBILE NON-HD PRIMARY FIXED SHEAVE AND POST ASSY	1
3F	1001020	RAGE 3 & 6 SPIDER TOOL (SOLD SEPARATELY)	1
4	1001275	RAGE 6 SNOWMOBILE SINGLE-STAGE QUICK-CHANGE SPIDER (TORQUE TO 500 FT/LBS)	1
5	3001005	SPIDER NUT RAGE PRIMARY (TORQUE TO 550 FT/LBS)	1
6	1001257	SINGE-STAGE RAGE 6 NON-HD SNOWMOBILE PRIMARY COVER	1
7	1001635	SINGLE-STAGE RAGE 6 SPIDER COMPOSITE ROLLER-BUSHING STYLE KIT	1
8	PER APPLICATION	BOLT	1
8.2	PER APPLICATION	LOCK WASHER	1
8.3	PER APPLICATION	CLUTCH BOLT SPACER	1
12	1001125	35mm QUICK-CHANGE BELT SHIM .03 THICK	3
12B	1001126	35mm QUICK-CHANGE BELT SHIM .06 THICK	3
13	PER APPLICATION	PULLER	1
15	2810 / VH193	MOVABLE BUSHING w/RETAINING CLIP	1
16	1816 / VH131	COVER BUSHING w/ RETAINING CLIP	1
17	1001221	PNEUMATIC SINGLE-STAGE RAGE 6 COVER SCREW SET (12)	1
18	1001104	SNOWMOBILE PRIMARY QUICK-CHANGE SLEEVE HD	1
24	1001091	TRA SPRING SPACER	2
25	1001129	35mm QUICK-CHANGE SPIDER SHIM .03 THICK	2
25B	1001130	35mm QUICK-CHANGE SPIDER SHIM .06 THICK	2
26	1001093	SPRING SPACER for QUICK-CHANGE RAGE PRIMARY CLUTCH	1
27	1001227	RAGE PRIMARY SINGEL-STAGE RAGE 6 CAM ARM POSITIONING ADJUSTMENT SET SCREW SET	1
28	1001043	RAGE ATV PRIMARY COMPRESSION TOOL M14-1.5 (SOLD SEPARATELY)	1
29	HIGHLIGHTED IS USED	CAM ARM PIN CONVERSION OPTIONS	6
	1001321	5/16" FIXED PIN for .470 WIDE WEIGHT	
	1001319	5/16" FIXED PIN for .570 WIDE WEIGHT	
	1001326	8MM YAMAHA PIN for .570 WIDE WEIGHT	
	1001323	1/4" DIAMETER PIN for .470 WIDE WEIGHT	

**WARNING: Engaging clutch without a belt installed will cause cam arm damage or breakage. Torque clutch bolt to crank and start engine. Slowly rev engine to 5000 RPM with belt installed and no load on drive train. Shut off engine and retorque clutch bolt. Periodically check torque spec after first runs. Never run clutch without the safety clutch cover installed.**