



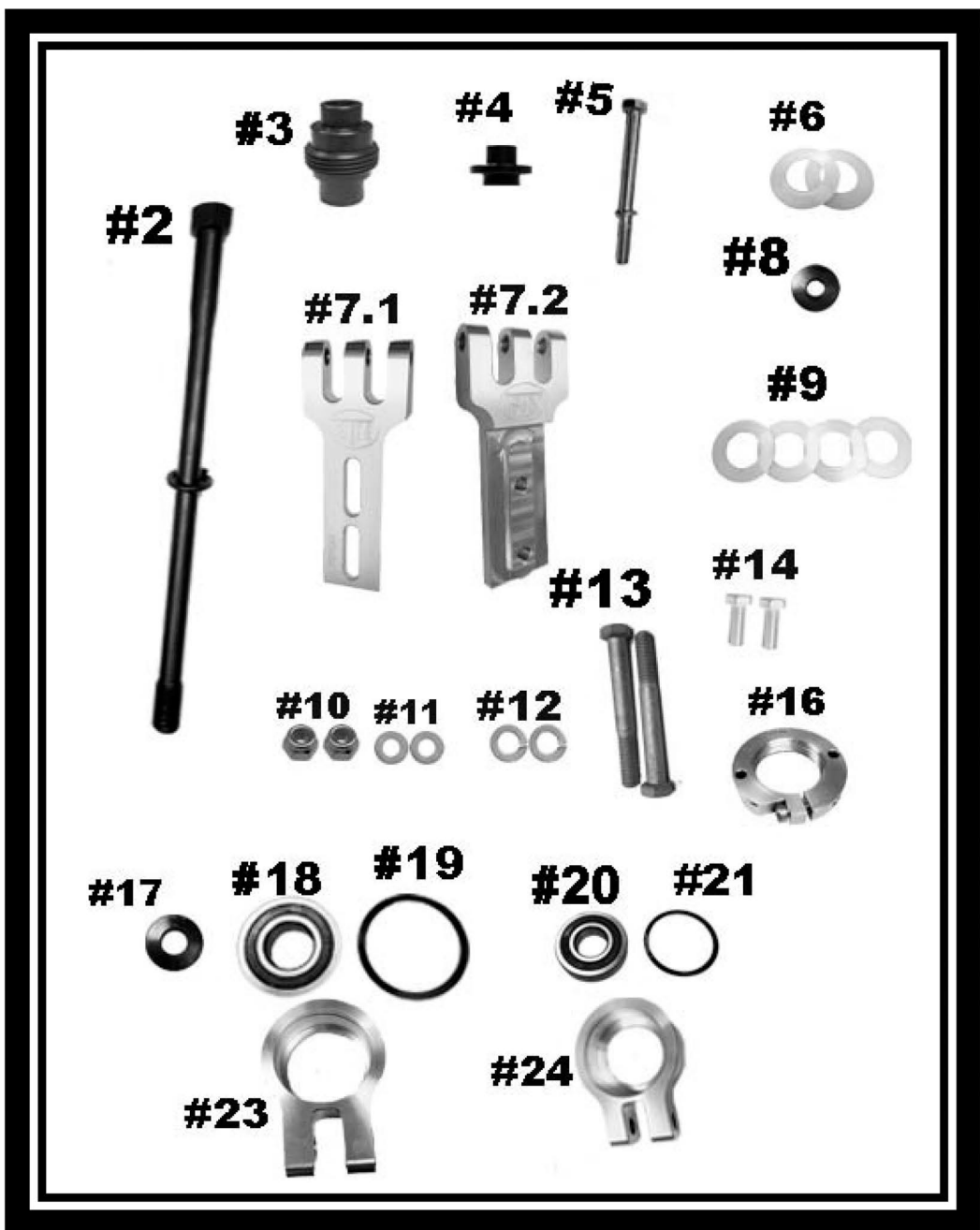
STM Powersports

RZR Special 30MM Rage Primary & XP TURBO/PRO XP RAGE 4HD Primary
Part Number 1001488

Tied Clutch Brace

Part# 1001488

FOR DRAG RACING APPLICATIONS ONLY



STM Powersports
(248) 673-8408

www.stmpowersports.com

9/29/2022



STM Powersports

RZR Special 30MM Rage Primary & XP TURBO/PRO XP RAGE 4HD Primary
Part Number 1001488

FOR DRAG RACING APPLICATIONS ONLY

Item #	Quantity	Description	Part Number
2	1	Primary Clutch Bolt & Lock Washer (Torque to 60 ft/lbs)	1001193
3	1	Screw-On 30mm Adjuster Base	1001194
--	--	11-14 XP 900 WIDE BELT CONV	2001089
		14-15 XP 1000 WIDE BELT CONV	2001089
		16-22 XP 1000 WIDE BELT CONV	4001131
		16-20 XP-TURBO	2001228
		21+ XP-TURBO, TURBO S, PRO XP	2001292
4	1	Secondary Bearing Post	2001089
5	1	Secondary Retaining Bolt & Lock Washer	M10-1.25x90mm HHCS Torque to 60 ft/lbs.
		M10-1.25x130mm HHCS Torque to 60 ft/lbs.	2001293
		M10-1.25x90mm HHCS Torque to 60 ft/lbs.	2001293
		1001615 M10-1.25x120mm Torque to 60 ft/lbs.	M8-1.25x100mm Torque to 26 ft/lbs.
6	2	.030 Shim	1001173
7.1	1	10.5" Center to Center Lower Bracket	1001484
7.2	1	10.5" Center to Center Upper Bracket	1001485
8	1	Secondary Retaining Washer	1001219
9	4	.060 Shim	1001172
10	2	Flanged Nyloc Nut for Bracket Adjustment	3/8-16-NYLOCNUT
11	2	3/8" Flat Washer	3/8FW
12	2	3/8" Lock Washer	3/8LW
13	2	Bracket to Bearing Carrier Bolt	3/8-16x3
14	2	Bracket Length Adjustment Bolt	3/8-16x1" HHCS
16	1	Belt Spacing Adjuster Nut	1001171
17	1	Primary Bolt Retaining Washer	1001180
18	1	Primary Post Bearing	1001469
19	1	Primary Post Bearing Retaining Snap Ring	91985A251
20	1	Secondary Post Bearing	1001470
21	1	Secondary Post Bearing Retaining Snap Ring	91985A231
23	1	Primary Post Bearing Carrier	1001159
24	1	Secondary Post Bearing Carrier	1001160

DISCLAIMER:

This is an aftermarket performance product. It is the consumer's responsibility to read and follow the appropriate procedures listed for using this product. Consumer accepts all consequences by not following the above procedures. STM is not liable for any personal or property damage caused by this product.



IMPORTANT READ BEFORE INSTALLING WARNING:

The high-performance products you purchased are not for installation or operation by "Consumers", as defined by Magnuson-Moss Warranty Act. Do not install any performance parts or services unless you have the technical ability to properly set-up the entire machine to compensate for the installation of those parts. References in most of our literature to "bolt-on-parts" only indicate the parts are removable from the engine (as opposed to porting or machining type modifications). It is not meant to imply that the parts can be installed without additional modifications. The necessary work and expertise needed to install different products varies. Instructions, where provided, are given to assist in installation only; they are NOT a substitute for mechanical experience in setting up racing snowmobiles, watercraft or land-based vehicles. References to performance gains, reliability, ease of installation, etc. are based on our, and outside customer's experiences. This is NOT a guarantee of similar performance in very installation. While we sell proven hardware, in the end it is up to the individual racer to make the most of that hardware in his/her application.

STM Powersports
(248) 673-8408

www.stmpowersports.com

9/29/2022