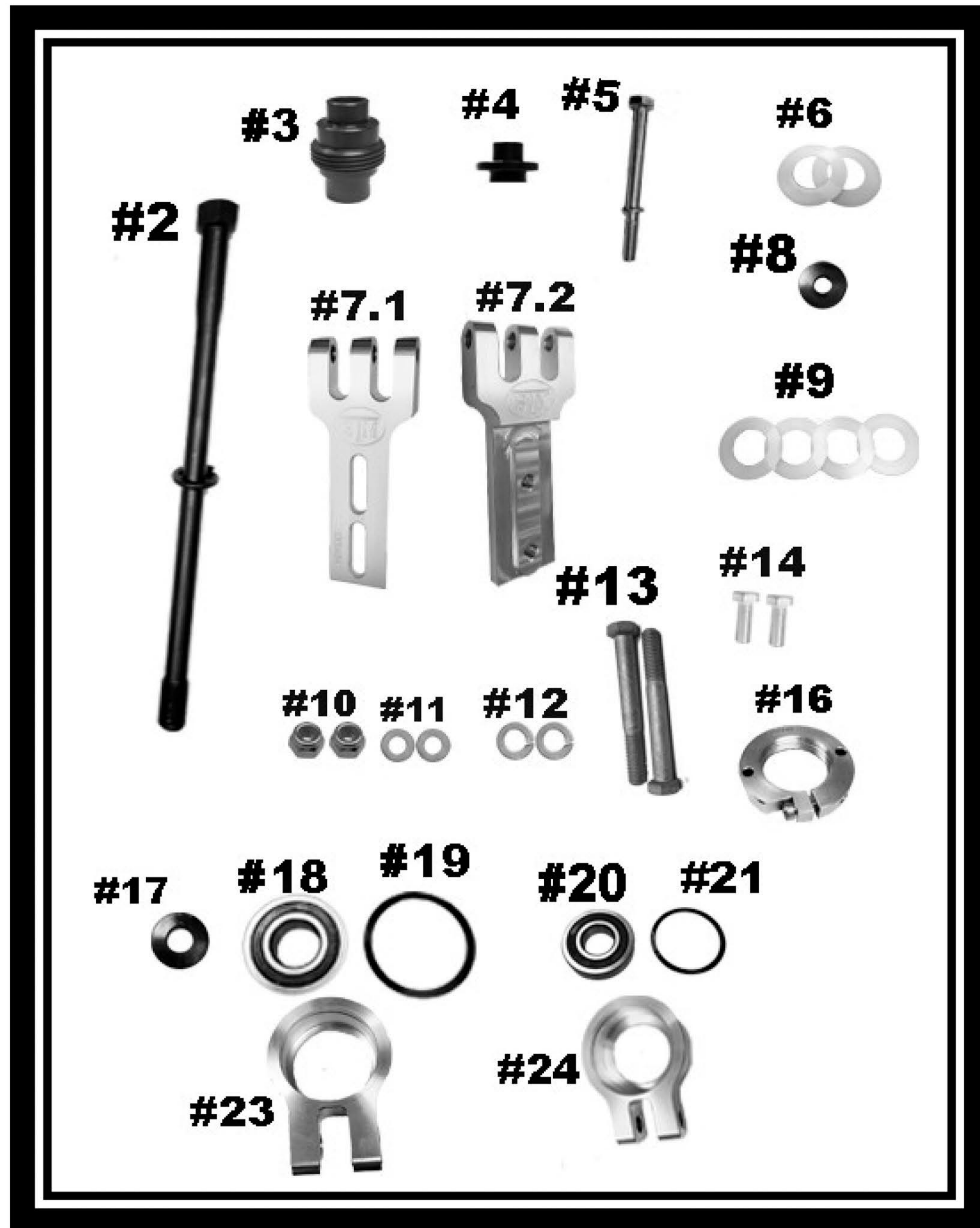




STM Powersports

Tied Clutch Brace For Screw-On 35mm Primary Part# 1001495



FOR DRAG RACING APPLICATIONS ONLY

STM Powersports
(248) 673-8408

www.stmpowersports.com

9/24/2021



STM Powersports

Tied Clutch Brace for Screw-On 35MM Primary Part# 1001495

| Item # | Quantity | Description | Part Number |
|---------------------------------------|----------|--|-------------------------------|
| 2 | 1 | Primary clutch bolt & lock washer | Per application |
| 3 | 1 | Screw-On 35MM Adjuster Base | 1001158 |
| 4 | 1 | Secondary Bearing Post | Per application |
| 5 | 1 | Secondary Retaining Bolt & lock washer | Per application |
| 6 | 2 | .030 Shim | 1001173 |
| BRACKETS - Only 1 Size is Used | | | |
| | | 10.5" Center to Center | 11.5" Center to Center |
| | | 12.5" Center to Center | |
| 7.1 - Lower | | 1001484 | 1001486 |
| 7.2 - Upper | | 1001485 | 1001487 |
| 8 | 1 | Secondary Retaining Washer for M10 Bolt | 1001219 |
| | or | For M8 Bolt | 1001217 |
| 9 | 4 | .060 Shim | 1001172 |
| 10 | 2 | Flanged Nyloc Nut for Bracket Adjustment | 3/8-16-NYLOCNUT |
| 11 | 2 | 3/8" Flat Washer | 3/8FW |
| 12 | 2 | 3/8" Lock Washer | 3/8LW |
| 13 | 2 | Bracket to Bearing Carrier Bolt | 3/8-16x3 |
| 14 | 2 | Bracket Length Adjustment Bolt | 3/8-16x1 HHCS |
| 16 | 1 | Belt Spacing Adjuster Nut | 1001171 |
| 17 | 1 | Primary Bolt Retaining Washer | 1001180 |
| 18 | 1 | Primary Post Bearing | 1001469 |
| 19 | 1 | Primary Post Bearing Retainer Snap Ring | WHM-200 |
| 20 | 1 | Secondary Post Bearing | 1001470 |
| 21 | 1 | Secondary Post Bearing Retaining Snap Ring | WHM-195 |
| 23 | 1 | Primary Post Bearing Carrier | 1001159 |
| 24 | 1 | Secondary Post Bearing Carrier | 1001160 |

DISCLAIMER:

This is an aftermarket performance product. It is the consumer's responsibility to read and follow the appropriate procedures listed for using this product. Consumer accepts all consequences by not following the above procedures. STM is not liable for any personal or property damage caused by this product.



IMPORTANT READ BEFORE INSTALLING WARNING:

The high-performance products you purchased are not for installation or operation by "Consumers", as defined by Magnuson-Moss Warranty Act. Do not install any performance parts or services unless you have the technical ability to properly set-up the entire machine to compensate for the installation of those parts.

References in most of our literature to "bolt-on-parts" only indicate the parts are removable from the engine (as opposed to porting or machining type modifications). It is not meant to imply that the parts can be installed without additional modifications. The necessary work and expertise needed to install different products varies. Instructions, where provided, are given to assist in installation only; they are NOT a substitute for mechanical experience in setting up racing snowmobiles, watercraft or land-based vehicles. References to performance gains, reliability, ease of installation, etc. are based on our, and outside customer's experiences. This is NOT a guarantee of similar performance in every installation. While we sell proven hardware, in the end it is up to the individual racer to make the most of that hardware in his/her application.

STM Powersports
(248) 673-8408

www.stmpowersports.com

9/24/2021