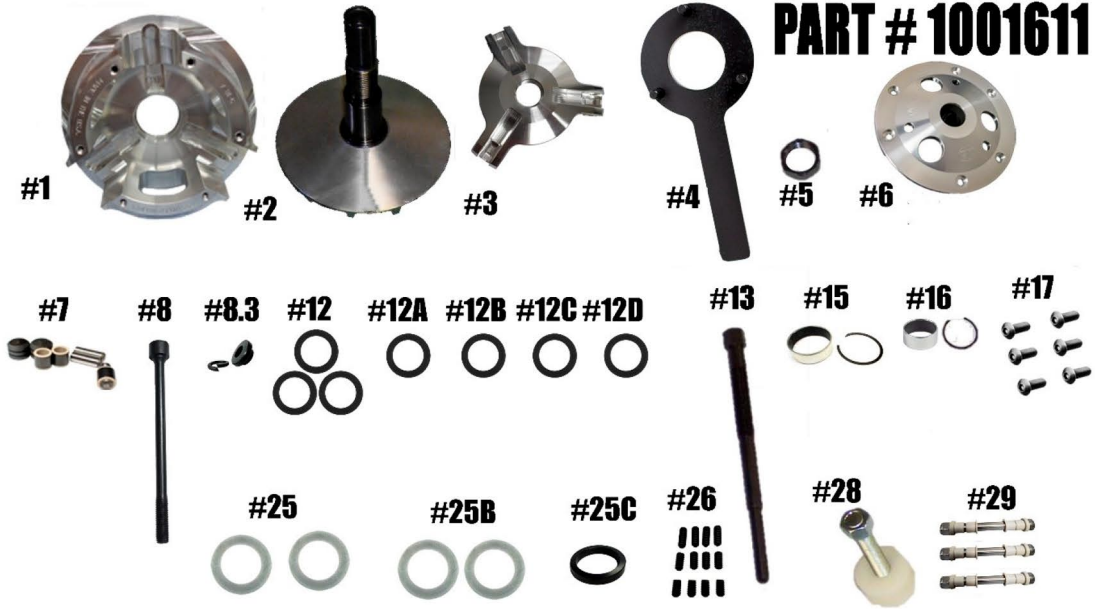


# STM RAGE 3WSP PRIMARY SCREW-ON 30mm 4-STROKE

## PART # 1001611



ITEM#	PART #	DESCRIPTION	QTY
1	1001613	RAGE 3 WSP PRIMARY MOVABLE SHEAVE 30mm & 35mm 4-STROKE	1
2	1001614	WSP PRIMARY FIXED SHEAVE AND POST ASSY 30mm 4-STROKE	1
3	1001572	RAGE 3 WIDE SPIDER (Torque to 500 ft./lbs.)	1
4	1001020	RAGE 3 & 6 SPIDER TOOL- Sold Separately	1
5	3001005	SPIDER NUT RAGE PRIMARY (Torque to 550 ft./lbs.)	1
6	1001571	RAGE 3 WIDE PRIMARY COVER	1
7	1001642	3 ARM WIDE SPIDER REBUILD KIT w/ COMPOSITE ROLLER BUSHINGS .610 ROLLER	1
8	1001612	PRIMARY CLUTCH BOLT 1/2"-20x6 3/4" HHCS (Torque to 85 ft./lbs.)	1
8.3	1001362	PRIMARY CLUTCH RETAINING WASHER for 1/2" DIAMETER BOLTS	1
12	1001402	BELT SHIM .03 THICK for 1.875" DIA POST	3
12A	1001527-04	.04 BELT SHIM for PRIMARY w/ 1.875" DIA. POST.	1
12B	1001527-05	.05 BELT SHIM for PRIMARY w/ 1.875" DIA. POST (1.38 WIDE BELT)	1
12C	1001527-120	.120 BELT SHIM for PRIMARY w/ 1.875" DIA. POST (1.44 WIDE BELT)	1
12D	1001527-140	.140 BELT SHIM for PRIMARY w/ 1.875" DIA. POST (1.480 WIDE BELT)	1
13	1001347	PRIMARY CLUTCH PULLER 5/8-18x8.625	1
15	1001004 / VH225	MOVABLE BUSHING w/RETAINING CLIP	1
16	1810.59 / VH131	ATV PRIMARY COVER BUSHING w/RETAINING CLIP	1
17	1001018	ATV RAGE 3 & 6 PRIMARY COVER SCREW SET (Torque to 105 in./lbs.)	1
25	C152994	SCREW-ON HD SPIDER SHIM .03 THICK FOR 1.875" DIA. POST	2
25B	C166597	SCREW-ON HD SPIDER SHIM .06 THICK FOR 1.875" DIA. POST	2
25C	1001212	.075" THICK SPIDER SHIM	1
26	1001094	RAGE PRIMARY CAM ARM POSITIONING ADJUSTMENT SET SCREW SET RAGE SNOWMOBILE & UTV PRIMARY COMPRESSION TOOL -5/8-18 (Sold Separately)	1
28	1001122		1
29	HIGHLIGHTED IS USED	RAGE "WIDE" PRIMARY PIN CONVERSION ASSEMBLY OPTIONS	3
	1001605	5/16" FIXED PIN for .470 WIDE WEIGHT	
	1001606	5/16" NON-FIXED PIN for .470 WIDE WEIGHT	
	1001604	5/16" FIXED PIN for .570 WIDE WEIGHT	
	1001574	5/16" NON-FIXED PIN for .570 WIDE WEIGHT	

**\*\*\* Please visit website for item pricing \*\*\***

STM Powersports

(248) 673-8408

[www.stmpowersports.com](http://www.stmpowersports.com)

9/21/23