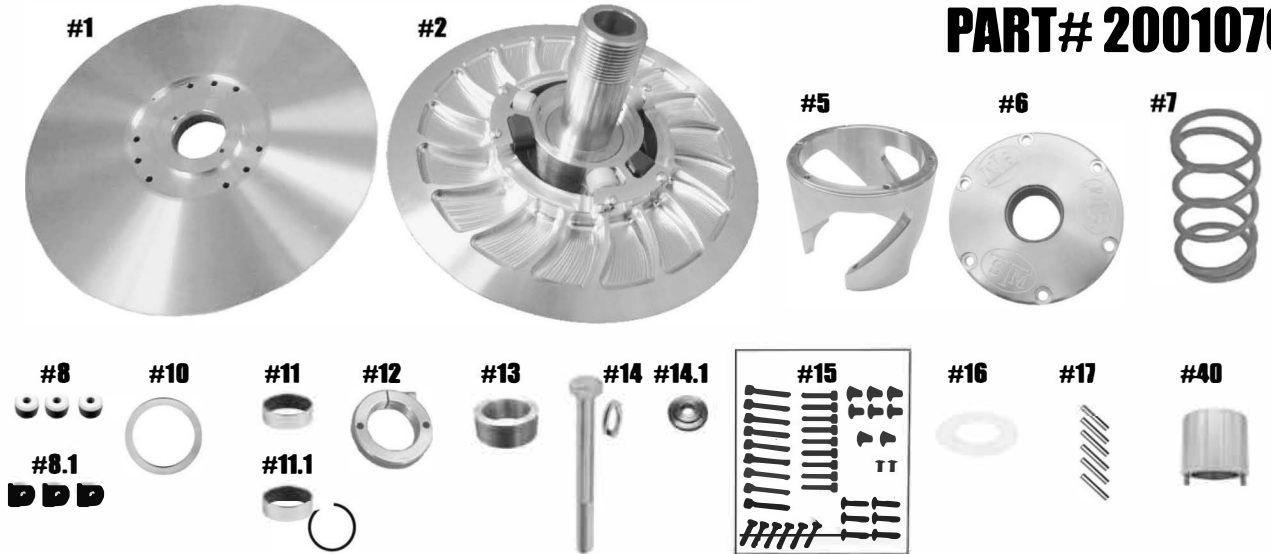


STM POWERSPORTS TUNER

APEX - Z1 (2014-15), XP1000 / JAGGED X CONVERSION

PART# 2001070



QTY	ITEM #	DESCRIPTION	PART #
1	1	TUNER SECONDARY MOVABLE SHEAVE	2001062
1	2	APEX-Z1 CONVERSION TURNER FIXED SHEAVE & POST ASSY	2001063/2001072
1	5	GEN 1 ATV HELIX NON-ENGINE BRAKING	HXATV
1	6	HD COMPRESSION SPRING HELIX COVER	1001067
1	7	KSS SECONDARY SPRING	ATVSS
3	8	TUNER ROLLER	1001047
3	8.1	GEN 1 TUNER SECONDARY BUTTON	1001048
1	10	HELIX COVER HD SPRING WASHER	1001049
1	11	MOVABLE BUSHING	2408
1	11.1	COVER BUSHING w/RETAINING CLIP	2408 / VH175
1	12	TUNER ADJUSTER NUT	1001059
1	13	APEX-Z1 CONVERSION TUNER DRIVEN RESISTANCE SPACER	2001066
1	14	RETAINING BOLT & LOCK WASHER-Torque to 60 ft/Lbs. (M10x1.25x120mm HHCS)	1001615
1	14.1	CONVERSION SECONDARY RETAINING WASHER	2001071
1	15	TURNER SECONDARY FASTENER KIT	1001034
1	16	ADJUSTER NUT THRUST WASHER	1001060
6	17	TUNER SECONDARY ROLLER PIN ¼" X 1" PULL DOWEL	¼"x1"PD
1	40	TUNER SECONDARY ADJUSTER NUT TOOL	1001064
1	NOT SHOWN	OPTIONAL -TUNER SECONDARY TORSION UPGRADE 1.5" BUSHING ID	1001080

*** * * Please visit our website for item pricing * * ***

STM Powersports
(248) 673-8408

www.stmpowersports.com

6/9/2023