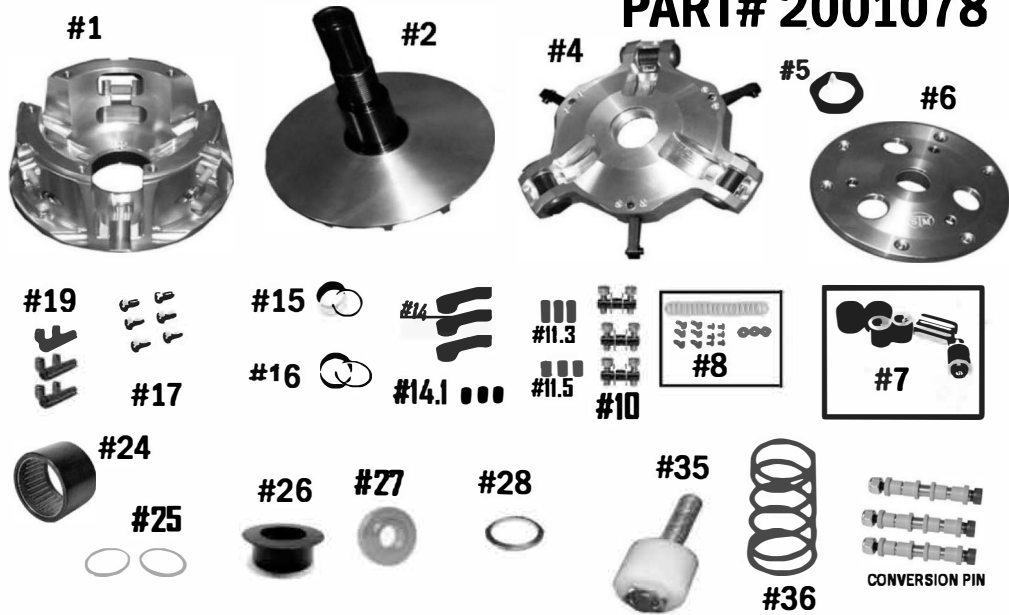




# STM RAGE 6 850/1000 POLARIS SPORTSMAN & SCRAMBLER



**PART# 2001078**



QTY	ITEM#	DESCRIPTION	PART#
1	1	RAGE 6 MOVABLE SHEAVE	2001082
1	2	FIXED SHEAVE AND POST ASSEMBLY	2001080 / 2001079
1	4	SPIDER (Torque to 500 ft./lbs.)	1001012
1	5	SPIDER NUT (Torque to 550 ft./lbs.)	1001044
1	6	COVER	4001021
1	7	COMPOSITE ROLLER-BUSHING STYLE PIN ROLLER KIT	1001546
1	8	1 <sup>ST</sup> STAGE FASTNER KIT	1001005
3	10	1 <sup>ST</sup> STAGE ARM PIN ASSY.	1001023
1	11.3	MOVABLE ROLLER .312 SET OF 3	1001025
1	11.5	MOVABLE ROLLER .500 SET OF 3	1001026
3	14	1 <sup>ST</sup> STAGE CAM ARM	1001024
3	14.1	1 <sup>ST</sup> STAGE CAM ARM BUSHING	1001330
1	15	MOVABLE BUSHING & SNAP RING	1001004 / VH225
1	16	COVER BUSHING & SNAP RING	1810.590 / VH131
1	17	COVER SCREW SET	1001018
3	19	MOVABLE ROLLER PIN ASSY.	1001028
1	24	2-WAY BEARING .47MM	1001000
2	25	BEARING THRUST WASHER	1001019
1	26	BEARING RETAINER CAP	3001000
1	27	CLUTCH BOLT WASHER	2001081
1	28	PRIMARY SPRING SPACER .125 SHIM	1001276
1	35	COMPRESSION TOOL 3/4-16 (SOLD SEPARATELY)	1001022
1	36	PATV STYLE PRIMARY SPRING	PER APPLICATION
3		CONVERSION PIN OPTIONS	ONLY 1 IS USED
		5/16" FIXED PIN .470 WIDE WEIGHT	1001321
		5/16" FIXED PIN .570 WIDE WEIGHT	1001319
		5/16" NON-FIXED PIN .470 WIDE WEIGHT	1001322
		5/16" NON-FIXED PIN .570 WIDE WEIGHT	1001320
		1/4" DIAMETER PIN .470 WIDE WEIGHT	1001323

**\*\*\* Please Visit Website for Item Pricing \*\*\***

*STM Powersports*  
(248) 673-8408

[www.stmpowersports.com](http://www.stmpowersports.com)

12/22/2021