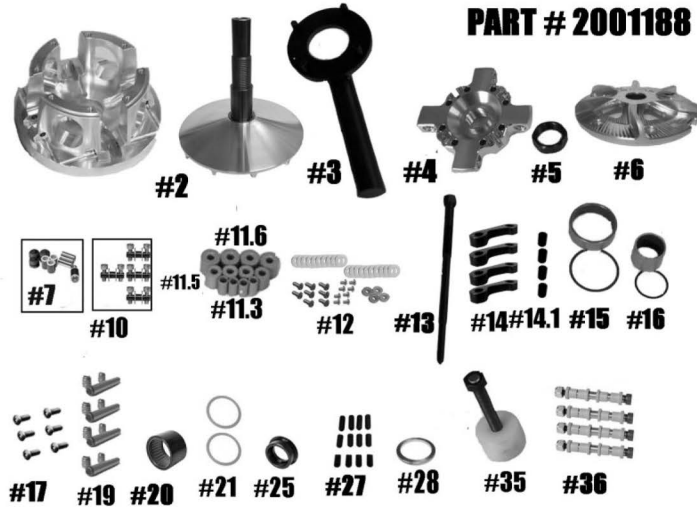


# STM RAGE 8 XP TURBO 2-WAY BEARING

## PRIMARY

**PART # 2001188**



QTY	ITEM#	DESCRIPTION	PART#	
1	1	RAGE 8 MOVABLE SHEAVE	2001190	
1	2	FIXED SHEAVE AND POST ASSY.	2001107 / 2001169	
1	3	SPANNER TOOL (SOLD SEPARATELY)	1001032	
1	4	SPIDER (Torque to 500 ft./lbs.)	1001264	
1	5	SPIDER NUT (Torque to 550 ft./lbs.)	3001005	
1	6	RAGE 4 & 8 FINNED COVER	2001123	
1	7	COMPOSITE ROLLER BUSHING STYLE PIN ROLLER KIT	1001651	
1	NOT SHOWN	CLUTCH BOLT - TORQUE TO 90-95 FT/LBS	USE STOCK BOLT	
4	10	FIRST STAGE ARM PIN ASSY.	1001023	
1	11.3	MOVABLE ROLLER .312 Set of 4	1001040	
1	11.5	MOVABLE ROLLER .500 Set of 4	1001041	
1	11.6	MOVABLE ROLLER .625 Set of 4	1001042	
1	12	FIRST STAGE FASTNER KIT	1001006	
1	13	PULLER	1001189	
4	14	FIRST STAGE CAM ARM HD	1001024	
4	14.1	FIRST STAGE CAM ARM BUSHING	1001330	
1	15	MOVABLE BUSHING w/ VH225 RETAINING CLIP	3012.620	
1	16	COVER BUSHING w/ VH131 RETAINING CLIP	1810.590	
1	17	COVER SCREW SET	1001031	
4	19	MOVABLE ROLLER PIN ASSY	1001028	
1	20	2-WAY BEARING	1001000	
2	21	2-WAY BEARING THRUST WASHER	1001019	
1	25	BEARING CAP	2001170	
1	27	MOVABLE SHEAVE SET SCREW KIT	1001094	
1	28	PRIMARY SPRING SPACER .125 SHIM	1001276	
1	35	COMPRESSION TOOL 5/8"-18 (SOLD SEPARATELY)	1001122	
4	36	CONVERSION PIN OPTIONS BELOW	Only 1 is used	
	5/16" FIXED PIN .570 WIDE WEIGHT	1001319	5/16" NON-FIXED PIN .470 WIDE WEIGHT	1001322
	5/16" NON-FIXED PIN .570 WIDE WEIGHT	1001320	8MM YAMAHA PIN .570 WIDE WEIGHT	1001326
	5/16" FIXED PIN .470 WIDE WEIGHT	1001321	1/4" PIN .470 WIDE WEIGHT	1001323

**\*\*\*Please visit website for item pricing \*\*\***

*STM Powersports*  
(248) 673-8408

[www.stmpowersports.com](http://www.stmpowersports.com)

1/25/2023