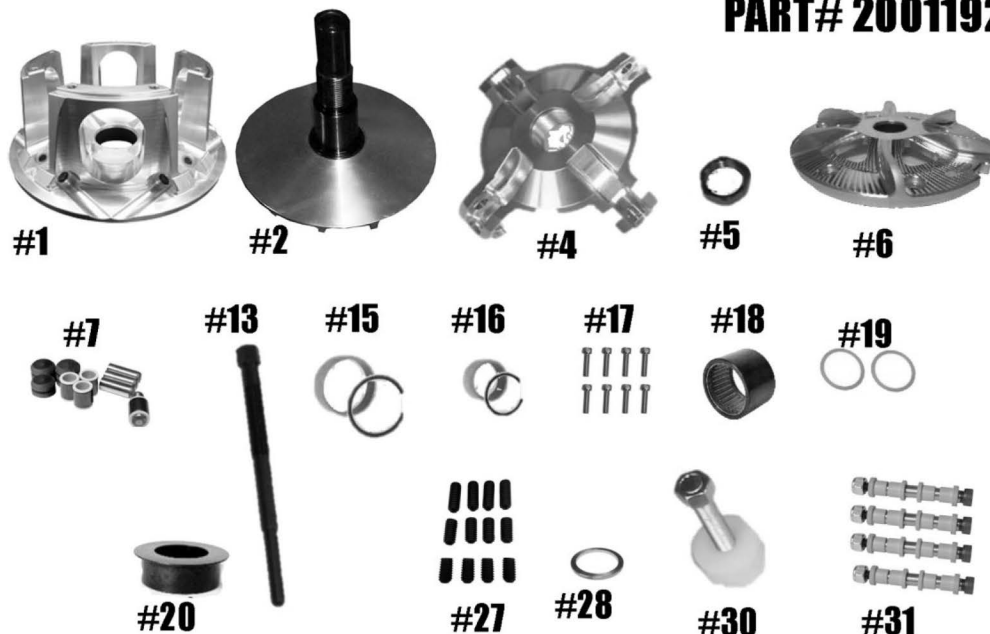


STM RAGE 4 RZR XP-TURBO 2-WAY BEARING PRIMARY

PART# 2001192



QTY	ITEM#	DESCRIPTION	PART #
1	1	RAGE 4 MOVABLE SHEAVE	2001171
1	2	FIXED SHEAVE AND POST ASSY.	2001107 / 2001169
1	4	SPIDER (Torque to 500 ft/lbs)	1001265
1	5	SPIDER NUT (Torque to 550 ft/lbs)	3001005
1	6	RAGE 4 & 8 FINNED COVER	2001123
1	7	COMPOSITE ROLLER BUSHING STYLE PIN ROLLER KIT	1001651
1	13	PULLER	1001189
1	15	MOVABLE BUSHING w/ VH225 RETAINING CLIP	3012.620
1	16	COVER BUSHING w/VH131 RETAINING CLIP	1810.590
1	17	COVER SCREW SET (torque to 105 in/lbs)	1001031
1	18	2-WAY SLEEVED BEARING	1001000
2	19	2-WAY BEARING THRUST WASHER	1001019
1	20	2-WAY BEARING CAP	2001170
1	27	CAM ARM POSITIONING ADJUSTMENT SET SCREW SET	1001094
1	28	PRIMARY SPRING SPACER .125 SHIM	1001276
1	30	COMPRESSION TOOL 5/8"-18 (Sold Separately)	1001122
4	31	CONVERSION PIN OPTIONS	Highlighted is used
		5/16" FIXED PIN .470 WIDE WEIGHT	1001321
		5/16" FIXED PIN .570 WIDE WEIGHT	1001319
		8MM YAMAHA PIN .570 WIDE WEIGHT	1001326
		1/4" DIAMETER PIN .470 WIDE WEIGHT	1001323
		5/16" NON-FIXED PIN .470 WIDE WEIGHT	1001322
		5/16" NON-FIXED PIN .570 WIDE WEIGHT	1001320

***** Please visit website for item pricing *****

STM Powersports
(248) 673-8408

www.stmpowersports.com

1/25/2023