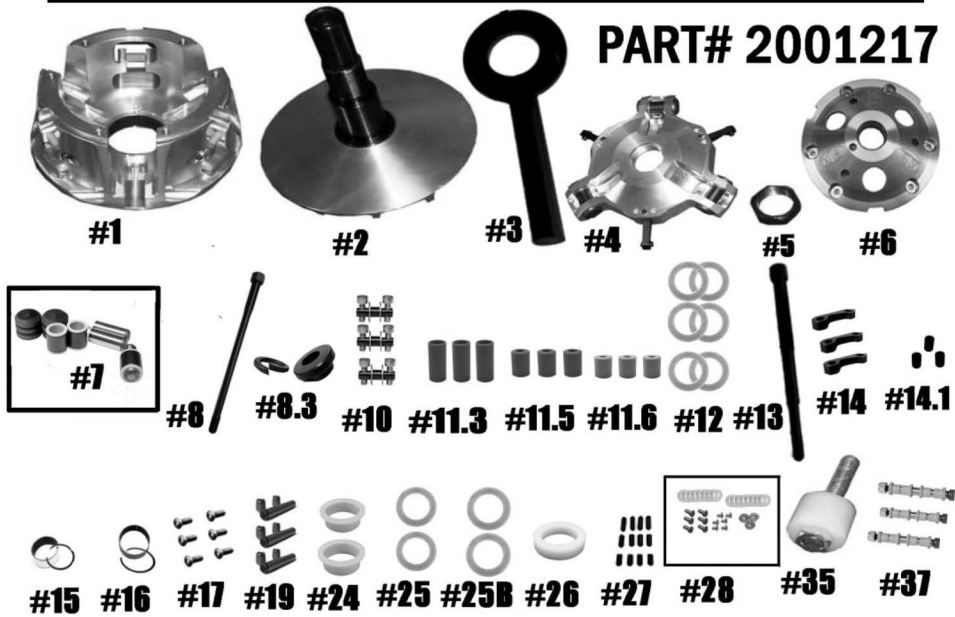


STM RAGE 6 XP-1000

WIDE BELT CONVERSION PRIMARY



QTY	ITEM#	DESCRIPTION	PART #
1	1	RAGE 6 MOVABLE SHEAVE	1001205
1	2	FIXED SHEAVE AND POST ASSY	2001107 / 2001084
1	3	SPANNER TOOL (SOLD SEPARATELY)	1001020
1	4	SPIDER (Torque to 500 ft/lbs)	1001266
1	5	SPIDER NUT (Torque to 550 ft/lbs)	3001005
1	6	COVER	1001183
1	7	COMPOSITE BUSHING SPIDER PIN-ROLLER KIT	1001546
1	8	CLUTCH BOLT (Torque to 60-75 ft/lbs)	1001261
1	8.3	CLUTCH BOLT LOCK WASHER & RETAINING WASHER	1001396
3	10	1 ST STAGE ARM PIN ASSY	1001023
1	11.3	MOVABLE ROLLER .312 SET	1001025
1	11.5	MOVABLE ROLLER .500 SET	1001026
1	11.6	MOVABLE ROLLER .625 SET	1001027
6	12	.03 BELT SHIM	1001403
1	13	PULLER	1001189
3	14	1 ST STAGE CAM ARMS HD	1001024
3	14.1	1 ST STAGE CAM ARM BUSHING	1001330
1	15	MOVABLE BUSHING w/ VH181 RETAINING CLIP	2610
1	16	COVER BUSHING w/ VH131 RETAINING CLIP	1816
1	17	COVER SCREW SET	1001206
3	19	PRIMARY 1 ST STAGE ROLLER PIN ASSEMBLY	1001028
2	24	TRA SPRING BUSHING	1001091
2	25	.03 SPIDER SHIM	C154445
2	25B	.06 SPIDER SHIM	C154446
1	26	SPRING SPACER	1001092
1	27	SET SCREW SET	1001094
1	28	1 ST STAGE FASTNER KIT	1001005
1	35	COMPRESSION TOOL (Sold Separately)	1001122
3	37	CONVERSION PIN OPTION	HIGHLIGHTED IS USED
		5/16" FIXED PIN .470 WIDE WEIGHT	1001321
		5/16" NON-FIXED PIN .470 WIDE WEIGHT	1001322
		5/16" FIXED PIN .570 WIDE WEIGHT	1001319
		5/16" NON-FIXED PIN .570 WIDE WEIGHT	1001320

***** Please visit website for item pricing *****