

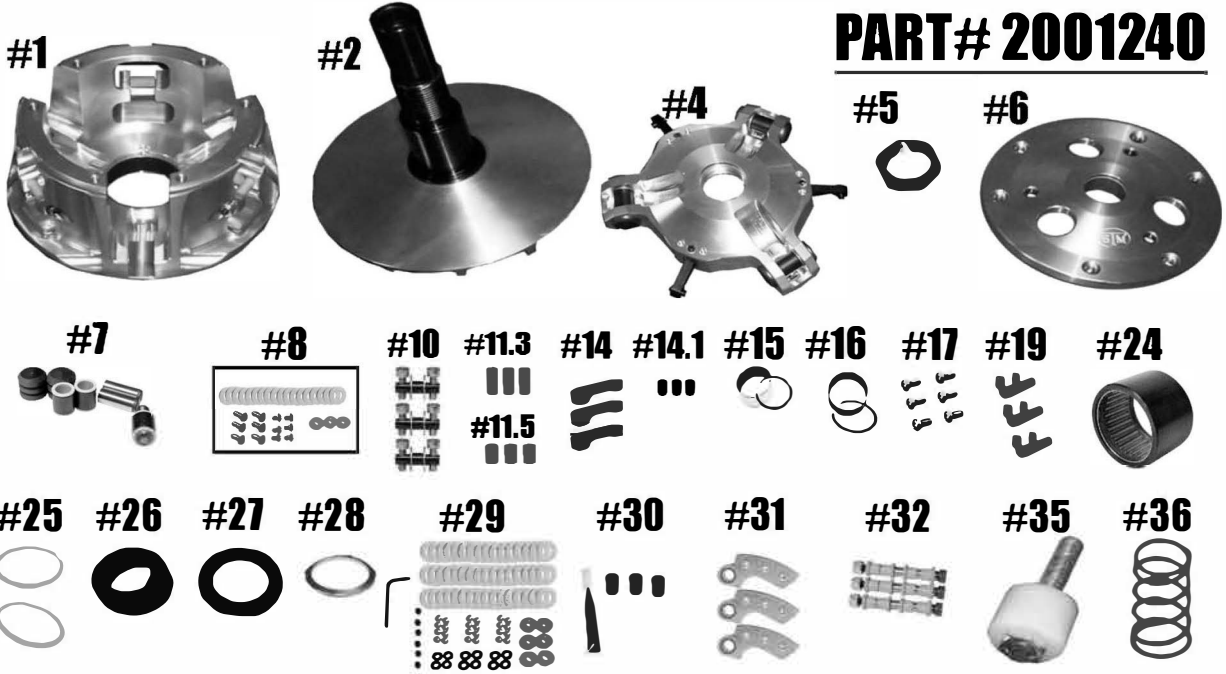


STM RAGE 6RS POLARIS RZR XP 1000



PRIMARY

PART# 2001240



QTY	ITEM#	DESCRIPTION	PART#
1	1	RAGE 6RS MOVABLE SHEAVE	2001021
1	2	FIXED SHEAVE & POST ASSEMBLY	2001020/2001178
1	4	RAGE 6 RS SPREAD PIN SPIDER (Torque to 500 ft/lbs.)	1001536
1	5	SPIDER NUT (Torque to 550 ft/lbs.)	3001005
1	6	RAGE 3 & 6 PRIMARY COVER	4001021
1	7	COMPOSITE ROLLER BUSHING STYLE PIN-ROLLER KIT	1001546
1	8	1 ST STAGE FASTNER KIT	1001005
3	10	1 ST STAGE ARM PIN ASSY.	1001023
1	11.3	MOVABLE ROLLER .312 (Set of 3)	1001025
1	11.5	MOVABLE ROLLER .500 (Set of 3)	1001026
3	14	1 ST STAGE CAM ARM	1001024
3	14.1	1 ST STAGE CAM ARM BUSHING	1001330
1	15	MOVABLE BUSHING W/ VH225 SNAP RING	1001004
1	16	COVER BUSHING W/ VH131 SNAP RING	1810.590
1	17	COVER SCREW SET (Torque to 105 in/lbs.)	1001018
3	19	MOVABLE ROLLER PIN ASSY.	1001028
1	24	2-WAY BEARING 47mm	1001000
2	25	BEARING THRUST WASHER	1001019
1	26	BEARING CAP	1001001
1	27	.060 SPIDER SHIM	1001204
1	28	PRIMARYSPRINGSPACER .125 SHIM	1001276
1	29	SUPER TIP FASTNER KIT	30FK3
3	30	CAM ARM BUSHING	1001203
3	31	50AFP-ST CAM ARM	1001306
3	32	CONVERSION PIN 5/16" NON-FIXED .570 WIDE WEIGHT	1001320
1	35	COMPRESSION TOOL 3/4"-16 (SOLD SEPERATELY)	1001022
1	36	PATV STYLE PRIMARY SPRING	PER APPLICATION

**** PLEASE VISIT WEBSITE FOR ITEM PRICING ****

STM Powersports
(248) 673-8408

www.stmpowersports.com

3/30/2022