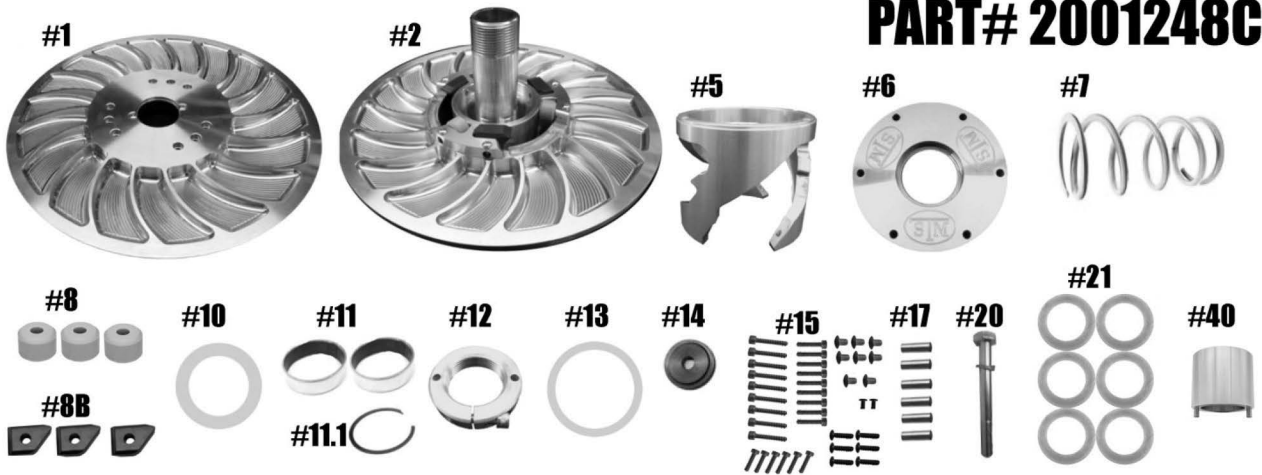


STM TUNER INSTRUCTIONS

GEN II POLARIS 850 SNOWMOBILE TUNER DRIVEN

PART# 2001248C



QTY	ITEM#	Description	Part #
1	1	MOVABLE SHEAVE	2001076
2	2	FIXED SHEAVE ASSY / POST	2001075 / 2001077
1	5	HELIX	HXSM 2S
1	6	HEAVY DUTY COMPRESSION SPRING HELIX COVER	1001067
1	7	SPRING	PER APPLICATION
3	8	ROLLER	1001047
3	8B	REVERSE BUTTONS	1001077
1	10	ADJUSTER NUT WASHER	1001060
2	11	COVER AND MOVABLE SHEAVE BUSHING	2408
1	11.1	BUSHING RETAINING CLIP	VH175
1	12	ADJUSTMENT NUT	1001059
2	13	HELIX COVER HD SPRING WASHER	1001049
1	14	RETAINING WASHER	2001242
1	15	TUNER BOLT KIT	1001034
6	17	HARDENED ROLLER PIN	1/4"x1"PD
1	20	SECONDARY RETAINING BOLT (M10-1.25x45mm) & LOCK WASHER	M10-1.25 x 45MM
1	21	OFFSET SHIMS SET OF 6	C157843-6
1	40	ADJUSTER NUT TOOL	1001064

*** * * Please visit website for item pricing * * ***