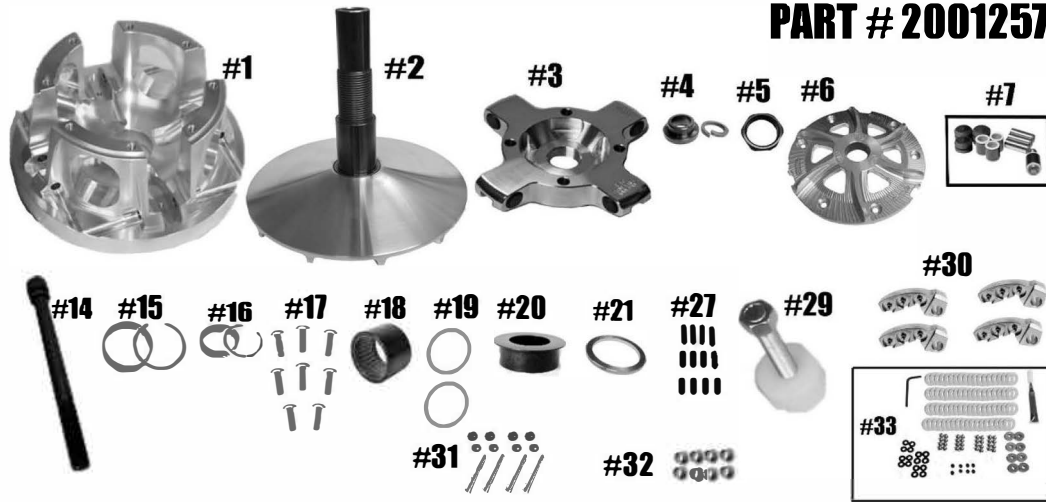


## STM RAGE 4WCP POLARIS RZR PRO XP, XP-TURBO, XP-TURBO S & RS1 PRIMARY

**PART # 2001257**



QTY	ITEM#	DESCRIPTION	PART #
1	1	RAGE 4 MOVABLE SHEAVE	2001264
1	2	FIXED SHEAVE AND POST ASSEMBLY	2001260/2001272
1	3	RAGE 4 WIDE SPIDER (Torque to 500 ft/lbs)	1001608
1	4	PRIMARY RETAINING WASHER & 14mm LOCK WASHER	1001540
1	5	SPIDER NUT (Torque to 550 ft/lbs)	3001005
1	6	RAGE 4W FINNED COVER	1001592
1	7	RAGE 4W SPIDER PIN-ROLLER KIT	1001643
1	13	PULLER 5/8"-18X12.057"	1001189
1	14	PRIMARY BOLT M14-1.5x8.5" (torque to 85 ft/lbs)	1001657
1	15	MOVABLE BUSHING with VH225 (retaining clip)	1001004
1	16	COVER BUSHING with VH131 (retaining clip)	1810.590
1	17	COVER SCREW SET (torque to 105 in/lbs)	1001031
1	18	2-WAY SLEEVED BEARING	1001000
2	19	2-WAY BEARING THRUST WASHER	1001019
1	20	2-WAY BEARING CAP	2001252
1	21	PRIMARY SPRING SPACER .125 SHIM	1001276
1	27	CAM ARM POSITIONING ADJUSTMENT SCREW SET	1001094
1	29	COMPRESSION TOOL 5/8"-18 (SOLD SEPARATELY)	1001122
4	30	CAM ARM-HB STYLE	50 GRAM BASE - 1001585 OR 60 GRAM BASE - 1001584
4	OR	CAM ARM-AFP STYLE	50 GRAM BASE - 2001151 OR 60 GRAM BASE - 2001245
4	31	CAM ARM PIN & SET SCREWS	1001594
4	32	CAM ARM BUSHING SET (2)	1001588
1	33	CAM ARM TUNING FASTNER KIT	32 FK 4
	Not shown	SPIDER TOOL (sold separately)	1001032

**\*\*\* Please visit website for item pricing \*\*\***

**It's important to completely read the directions before installing the clutch**

STM Powersports  
(248) 673-8408

[www.stmpowersports.com](http://www.stmpowersports.com)

12/29/2022