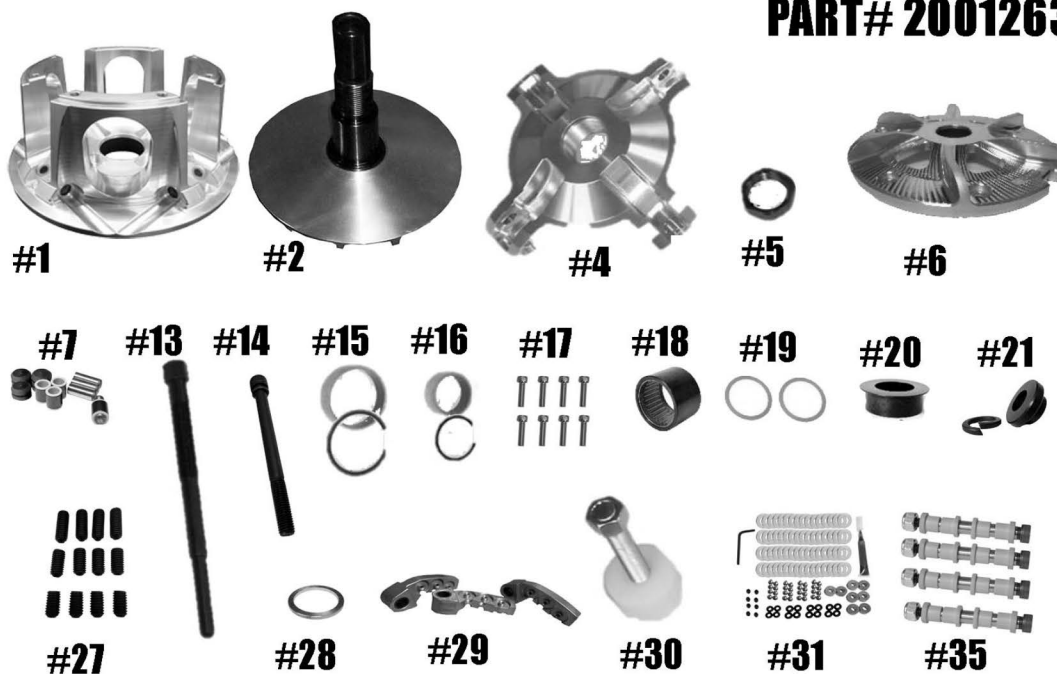


STM RAGE 4 RZR RS-1 TWO-WAY BEARING PRIMARY

PART# 2001263



QTY	ITEM#	DESCRIPTION	PART #
1	1	RAGE 4 MOVABLE SHEAVE	2001171
1	2	FIXED SHEAVE AND POST ASSY.	2001107/ 2001169
1	4	SPIDER (Torque to 500 ft/lbs)	1001265
1	5	SPIDER NUT (Torque to 550 ft/lbs)	3001005
1	6	RAGE 4 & 8 FINNED COVER	2001123
1	7	COMPOSITE ROLLER BUSHING PIN ROLLER KIT	1001651
1	13	PULLER	1001189
1	14	PRIMARY BOLT- Torque to 85 ft/lbs	1001657
1	15	MOVABLE BUSHING w/ VH225 RETAINING CLIP	3012.620
1	16	COVER BUSHING w/ VH131 RETAINING CLIP	1810.590
1	17	COVER SCREW SET (torque to 105 in/lbs)	1001031
1	18	2-WAY SLEEVED BEARING	1001000
2	19	2-WAY BEARING THRUST WASHER	1001019
1	20	2-WAY BEARING CAP	2001170
1	21	PRIMARY RETAINING WASHER & LOCK WASHER	1001540
1	27	ENGAGEMENT SET SCREW SET	1001094
1	28	PRIMARY SPRING SPACER .125 SHIM	1001276
4	29	50YS TURBO "TRAIL" STYLE CAM ARMS	5001017
	OR	60YS TURBO "TRAIL" STYLE CAM ARMS	5001024
1	30	COMPRESSION TOOL 5/8"-18 (SOLD SEPARATELY)	1001122
1	31	FOUR ARM SUPER TIP FASTNER KIT	32 FK4
4	35	8MM NON-FIXED PIN .570 WIDE WEIGHT	1001326

***** Please visit website for item pricing *****

Set-Up

Your primary comes assembled. The spider and spider nut have been tightened.

STM Powersports

(248) 673-8408

www.stmpowersports.com

1/25/2023