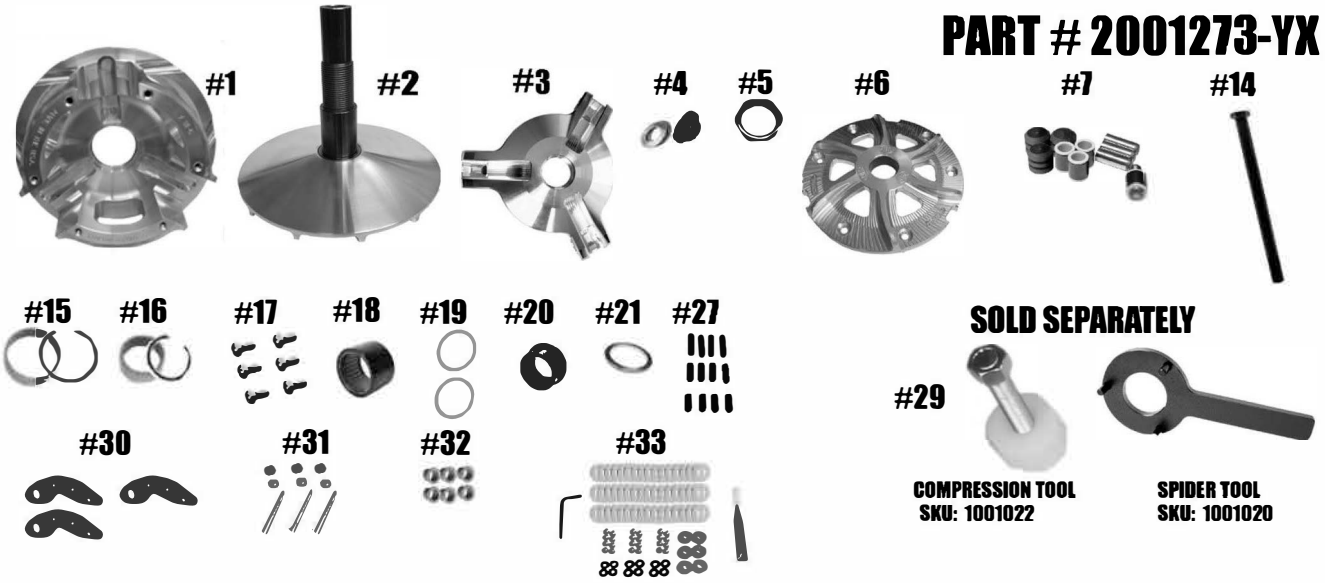


STM RAGE 3WCP POLARIS RZR PRO XP, XP-TURBO, XP-TURBO S & RS1 PRIMARY

PART # 2001273-YX



ITEM#	DESCRIPTION	PART #
1	RAGE 3WCP PRIMARY WIDE CAPTURE PIN MOVABLE SHEAVE	2001254
1	FIXED SHEAVE AND POST ASSEMBLY FOR RAGE PRIMARY	2001260/2001272
1	RAGE 3 WIDE SPIDER (Torque to 500 ft/lb)	1001572
1	PRIMARY RETAINING WASHER & M14 STEEL WEDGE LOCK WASHER	2001328
1	SPIDER NUT RAGE PRIMARY (Torque to 550 ft/lb)	3001005
1	ATV RAGE 3 WIDE PRIMARY FINNED COVER	1001590
1	3-ARM WIDE SPIDER REBUILD KIT w/ COMPOSITE ROLLER BUSHINGS .610 ROLLER	1001642
1	RAGE PRIMARY BOLT M14- 1.5 x 8.5" (Torque to 55 ft/lb)	1001657
1	MOVABLE BUSHING & RETAINING CLIP	1001004 / VH225
1	ATV PRIMARY COVER BUSHING & RETAINING CLIP	1810.590 / VH131
1	RAGE 3 & 6 PRIMARY COVER SCREW SET (Torque to 105 in/lb)	1001018
1	SLEEVED 2-WAY BEARING 47mm	1001000
2	ATV PRIMARY BEARING CLUTCH THRUST WASHER	1001019
1	2-WAY BEARING CAP for RAGE 3WCP PRIMARY	2001327
1	PRIMARY SPRING SPACER .125 SHIM	1001276
1	RAGE PRIMARY CAM ARM POSITIONING ADJUSTMENT SET SCREW SET	1001094
1	RAGE ATV PRIMARY COMPRESSION TOOL 3/4" - 16 (SOLD SEPARATELY)	1001022
3	CAM ARM-X Series	50 GRAM BASE - 1001391 OR 55 GRAM BASE - 1001390
3	CAM ARM PIN & SET SCREW SET (Torque to 50 in/lbs.)	1001594
3	BUSHING SET (2) for CAPTURE PIN PRIMARY USING .570 WIDE CAM ARM WEIGHT	1001588
1	3-ARM NON-FIXED SUPERTIP CAM ARM TUNING FASTENER KIT	1001660
1	Not shown	RAGE 3 & 6 SPIDER TOOL (SOLD SEPARATELY)
		1001020

*** * * Please visit website for item pricing * * ***

It's important to completely read the directions before installing the clutch!



STM Powersports
(248) 673-8408

www.stmpowersports.com



5/31/2023