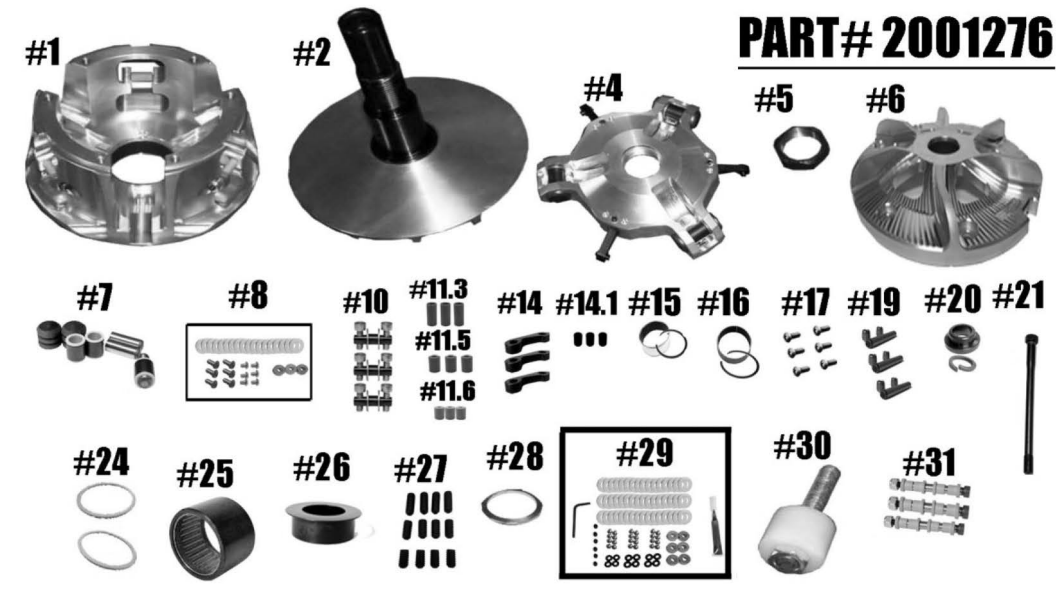


# Polaris RZR XP-Turbo STM Rage 6 2-Way Bearing Primary



QTY	ITEM#	DESCRIPTION	PART #
1	1	RAGE 6 MOVABLE SHEAVE	2001191
1	2	FIXED SHEAVE AND POST ASSY	2001260/2001272
1	4	SPIDER (Torque to 500 ft/lbs.)	1001266
1	5	SPIDER NUT (Torque to 550 ft/lbs.)	3001005
1	6	COVER	2001109
1	7	COMPOSITE ROLLER BUSHING STYLE SPIDER PIN-ROLLER KIT	1001546
1	8	1 <sup>ST</sup> STAGE 6 ARM FASTNER KIT	1001005
3	10	1 <sup>ST</sup> STAGE ARM PIN ASSY.	1001023
1	11.3	.312 MOVABLE ROLLER SET	1001025
1	11.5	.500 MOVABLE ROLLER SET	1001026
1	11.6	.625 MOVABLE ROLLER SET	1001027
3	14	1 <sup>ST</sup> STAGE HD CAM ARM	1001024
3	14.1	1 <sup>ST</sup> STAGE CAM ARM BUSHING	1001330
1	15	MOVABLE BUSHING and RETAINING CLIP (VH225)	3012.620
1	16	COVER BUSHING and RETAINING CLIP (VH131)	1810.590
1	17	COVER SCREW SET	1001018
1	19	MOVABLE ROLLER PIN ASSY.	1001028
1	20	PRIMARY M14 RETAINING WASHER & LOCK WASHER	1001540
1	21	CLUTCH BOLT - M14-1.5 x 8.50	1001657
2	24	2-WAY BEARING THRUST WASHER	1001019
1	25	2-WAY SLEEVED BEARING	1001000
1	26	SLEEVED BEARING CAP	2001170
1	27	SET SCREW SET	1001094
1	28	PRIMARY SPRING SPACER .125 SHIM	1001276
1	29	SUPER TIP FASNTER KIT	30 FK3
1	30	COMPRESSION TOOL 3/4"-16 (SOLD SEPARATELY)	1001022
3		CONVERSION PIN OPTIONS	Highlighted is Used
	5/16" FIXED PIN .570 WIDE WEIGHT	1001319	5/16" NON-FIXED PIN .470 WIDE WEIGHT 1001322
	5/16" NON-FIXED PIN .570 WIDE WEIGHT	1001320	8MM YAMAHA PIN .570 WIDE WEIGHT 1001326
	5/16" FIXED PIN .470 WIDE WEIGHT	1001321	1/4" PIN .470 WIDE WEIGHT 1001323

**\*\*\* Please visit website for item pricing \*\*\***

*STM Powersports*  
(248) 673-8408

[www.stmpowersports.com](http://www.stmpowersports.com)

2/14/2023