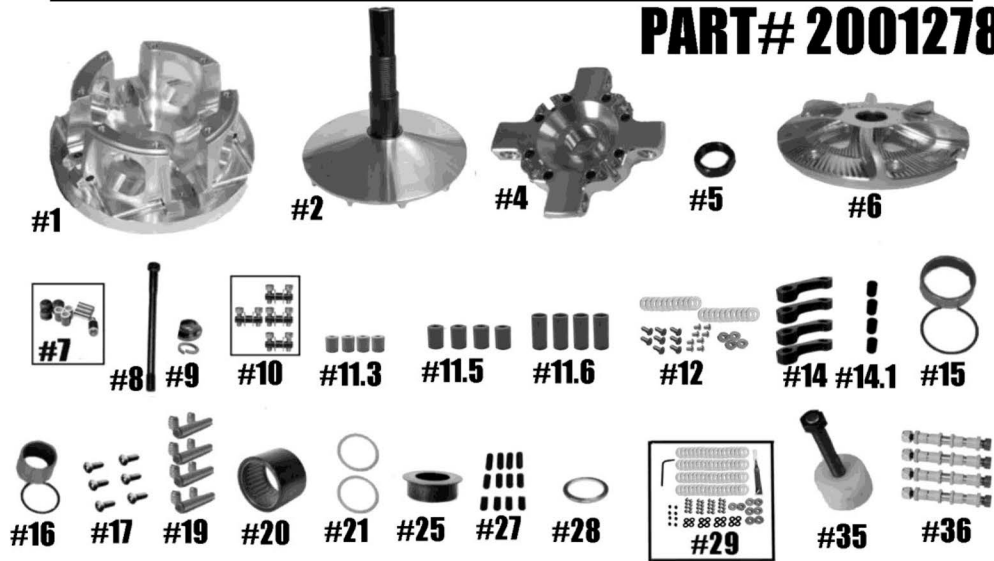


STM RAGE 8 XP TURBO 2-WAY BEARING PRIMARY

PART# 2001278



QTY	ITEM#	DESCRIPTION	PART#	
1	1	RAGE 8 MOVABLE SHEAVE	2001190	
1	2	FIXED SHEAVE AND POST ASSY.	2001260/2001272	
1	4	SPIDER (Torque to 500 ft/lbs.)	1001264	
1	5	SPIDER NUT (Torque to 550 ft/lbs.)	3001005	
1	6	RAGE 4 & 8 FINNED COVER	2001123	
1	7	COMPOSITE ROLLER BUSHING STYLE SPIDER PIN-ROLLER KIT	1001651	
1	8	CLUTCH BOLT - M14-1.5 x 8.50	1001657	
1	9	PRIMARY M14 RETAINING WASHER & LOCK WASHERS	1001540	
4	10	1 ST STAGE ARM PIN ASSY.	1001023	
1	11.3	MOVABLE ROLLER .312 Set of 4	1001040	
1	11.5	MOVABLE ROLLER .500 Set of 4	1001041	
1	11.6	MOVABLE ROLLER .625 Set of 4	1001042	
1	12	1 ST STAGE FASTENER KIT	1001006	
4	14	1 ST STAGE CAM ARM HD	1001024	
4	14.1	1 ST STAGE CAM ARM BUSHING	1001330	
1	15	MOVABLE BUSHING AND RETAINING CLIP (VH225)	3012.620	
1	16	COVER BUSHING AND RETAINING CLIP (VH131)	1810.590	
1	17	COVER SCREW SET	1001031	
4	19	MOVABLE ROLLER PIN ASSY	1001028	
1	20	2-WAY BEARING	1001000	
2	21	2-WAY BEARING THRUST WASHER	1001019	
1	25	BEARING CAP	2001170	
1	27	CAM ARM POSITIONING ADJUSTMENT SCREW SET	1001094	
1	28	PRIMARY SPRING SPACER .125 SHIM	1001276	
1	29	4 ARM FASTNER KIT	32 FK4	
1	35	COMPRESSION TOOL 3/4"-16 (SOLD SEPARATELY)	1001022	
4		CONVERSION PIN OPTIONS BELOW	Only 1 is used	
	5/16" FIXED PIN .570 WIDE	1001319	5/16" NON-FIXED PIN .470 WIDE WEIGHT	1001322
	5/16" NON-FIXED PIN .570	1001320	8MM YAMAHA PIN .570 WIDE WEIGHT	1001326
	5/16" FIXED PIN .470 WIDE	1001321	1/4" PIN .470 WIDE WEIGHT	1001323

Please visit website for item pricing