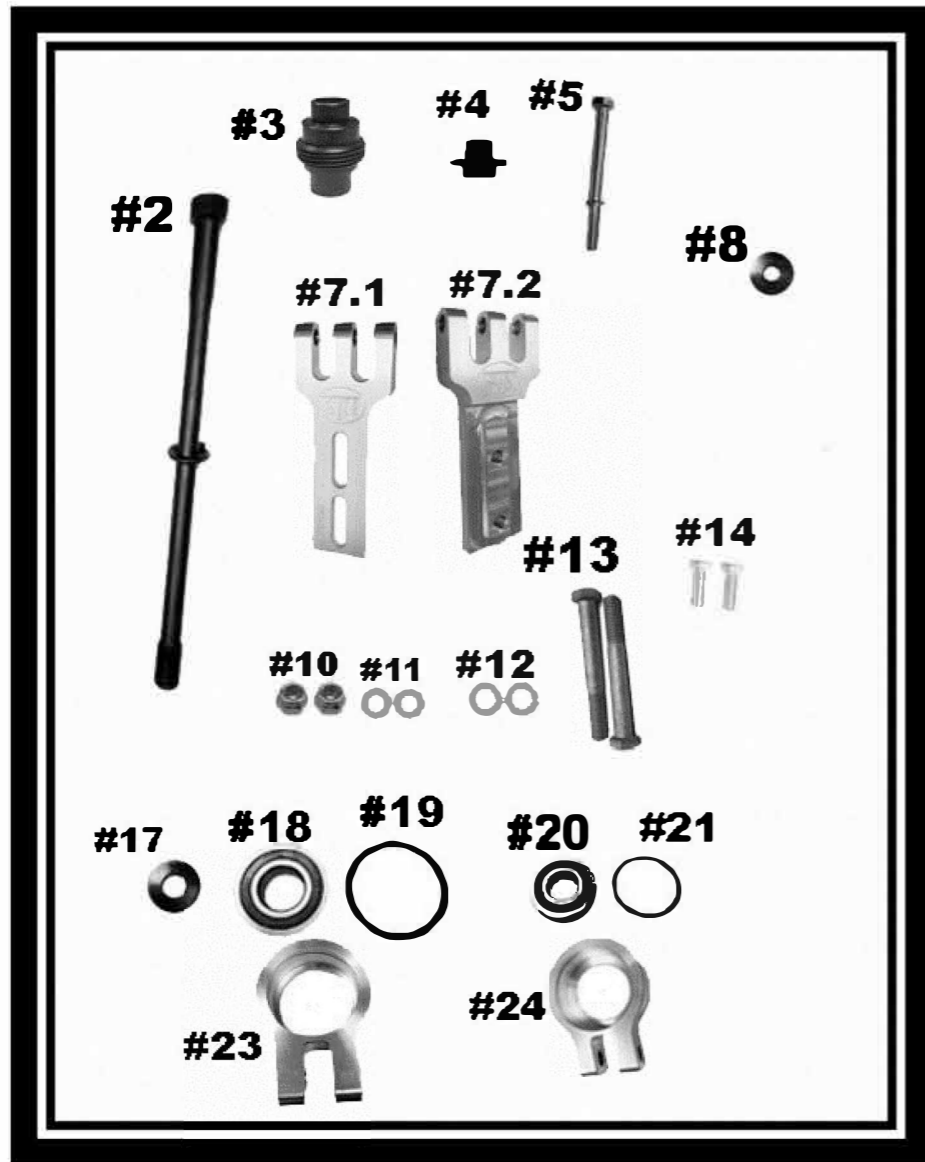




# Tied Clutch Brace

Part # 2001294

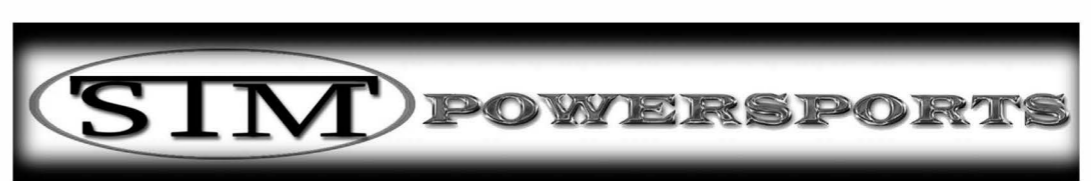
2021-22 RZR Turbo "S", XP-Turbo & Pro XP- STM Rage 3WCP (2001273) & 4WCP (2001274) Primary and Secondary (2001290)



**FOR DRAG RACING APPLICATIONS ONLY**

STM Powersports  
(248) 673-8408  
www.stmpowersports.com

3/9/2022



# 2021 RZR Turbo S STM Primary and Secondary Tied Brace

Part# 2001294

| Item # | Quantity | Description   | Part Number     |
|--------|----------|---|-----------------|
| 2      | 1        | Primary Clutch Bolt & Lock Washer                       | 1001261         |
| 3      | 1        | Primary Bearing Post                                    | 1001504         |
| 4      | 1        | Secondary Bearing Post                                  | 2001292         |
| 5      | 1        | Secondary Retaining Bolt & Lock Washer M8-1.25x100mm HH | 2001293         |
| 7.1    | 1        | 10.5" Center to Center Lower Bracket                    | 1001484         |
| 7.2    | 1        | 10.5" Center to Center Upper Bracket                    | 1001485         |
| 8      | 1        | Secondary Retaining Washer                              | 1001217         |
| 10     | 2        | Flanged Nyloc Nut for Bracket Adjustment                | 3/8-16-NYLOCNUT |
| 11     | 2        | 3/8" Flat Washer  | 3/8FW           |
| 12     | 2        | 3/8" Lock Washer  | 3/8LW           |
| 13     | 2        | Bracket to Bearing Carrier Bolt                         | 3/8-16x3        |
| 14     | 2        | Bracket Length Adjustment Bolt                          | 3/8-16x1" HHCS  |
| 17     | 1        | Primary Bolt Retaining Washer                           | 1001180         |
| 18     | 1        | Primary Post Bearing                                    | 1001469         |
| 19     | 1        | Primary Post Bearing Retaining Snap Ring                | 91985A251       |
| 20     | 1        | Secondary Post Bearing                                  | 1001470         |
| 21     | 1        | Secondary Post Bearing Retaining Snap Ring              | 91985A231       |
| 23     | 1        | Primary Post Bearing Carrier                            | 1001159         |
| 24     | 1        | Secondary Post Bearing Carrier                          | 1001160         |

**DISCLAIMER:**

This is an aftermarket performance product. It is the consumer's responsibility to read and follow the appropriate procedures listed for using this product. Consumer accepts all consequences by not following the above procedures. STM is not liable for any personal or property damage caused by this product.



**IMPORTANT READ BEFORE INSTALLING WARNING:**

The high-performance products you purchased are not for installation or operation by "Consumers", as defined by Magnuson-Moss Warranty Act.

Do not install any performance parts or services unless you have the technical ability to properly set-up the entire machine to compensate for the installation of those parts. References in most of our literature to "bolt-on-parts" only indicate the parts are removable from the engine (as opposed to porting or machining type modifications). It is not meant to imply that the parts can be installed without additional modifications. The necessary work and expertise needed to install different products varies. Instructions, where provided, are given to assist in installation only; they are NOT a substitute for mechanical experience in setting up racing snowmobiles, watercraft or land-based vehicles. References to performance gains, reliability, ease of installation, etc. are based on our, and outside customer's experiences. This is NOT a guarantee of similar performance in very installation. While we sell proven hardware, in the end it is up to the individual racer to make the most of that hardware in his/her application.

STM Powersports  
(248) 673-8408