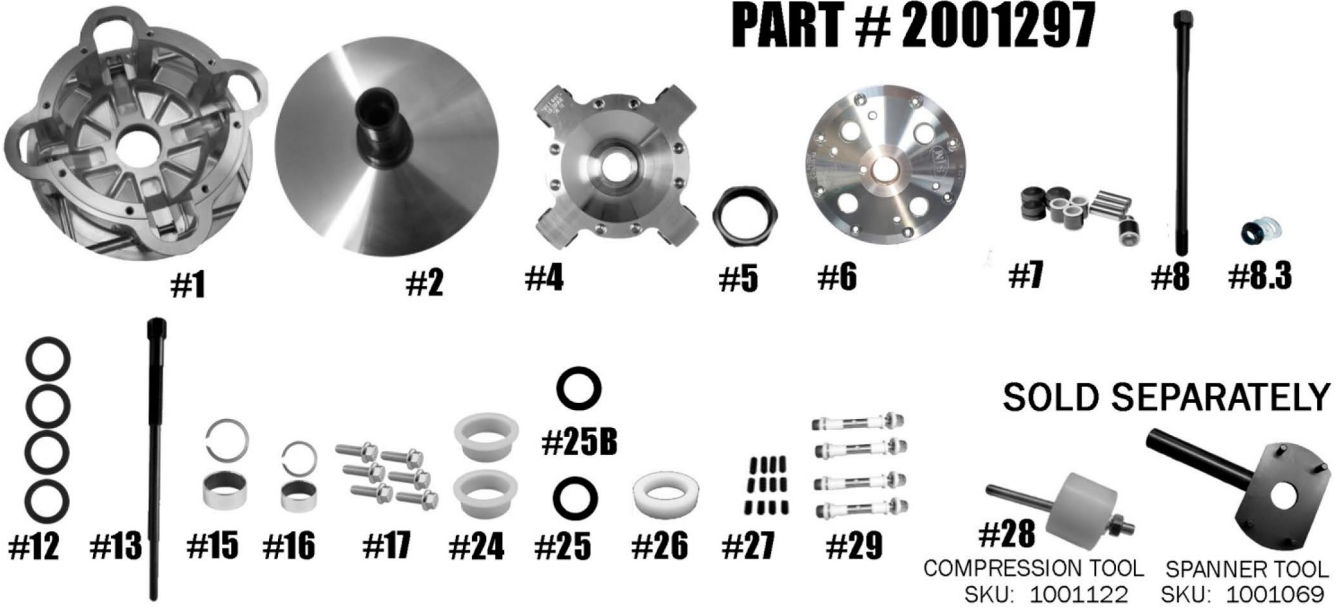


STM RAGE 4 HD XP-TURBO/PRO XP/XP-TURBO "S" PRIMARY

PART # 2001297



Check and make sure you have received all of the components below before proceeding

ITEM #	PART #	DESCRIPTION	QTY
1	2001253	RAGE 4 HD PRIMARY CLUTCH MOVABLE SHEAVE	1
2	2001298	TAGE 4 HD FIXED SHEAVE AND POST ASSY	1
4	1001138	RAGE 4 SCREW-ON HD SPIDER (Torque to 500 ft./lbs.)	1
5	3001005	SPIDER NUT RAGE PRIMARY (Torque to 550 ft./lbs.)	1
6	1001037	RAGE 4 & 8 LONG BOSS HD PRIMARY CLUTCH COVER	1
7	1001651	COMPOSITE ROLLER-BUSHING STYLE PIN ROLLER KIT RAGE 4 & 8 SPIDER NON-WIDE	1
8	1001262	RAGE PRIMARY RETAINING BOLT-M14-1.5x9.125" (Torque to 60 ft./lbs.)	1
8.3	2001343	PRIMARY M14 RETAINING WASHER for .760 POST BORE & STEEL WEDGE LOCK WASHER	1
12	1001403	30mm SCREW-ON BELT SHIM .03 THICK	4
13	1001189	STM CLUTCH PULLER FOR STM PRIMARY (5/8-18)	1
15	2610 / VH193	2610 MOVABLE BUSHING W/ RETAINING CLIP	1
16	1810 / VH131	COVER BUSHING W/ RETAINING CLIP	1
17	1001561	1/4-20 x 1 1/4" HHFS PRIMARY RAGE 4 COVER SCREW SET (Torque to 125 in./lbs.)	1
24	1001091	TRA SPRING SPACER	2
25	C152994	SCREW-ON HD SPIDER SHIM.03 THICK FOR 1.875" DIA POST (4)	2
25B	C166597	SCREW-ON HD SPIDER SHIM.06 THICK FOR 1.875" DIA POST (4)	2
26	1001092	SPRING SPACER FOR PS STYLE SPRINGS FOR SCREW-ON PRIMARY	1
27	1001094	PRIMARY CAM ARM POSITIONING ADJUSTMENT SET SCREW SET	1
28	1001122	RAGE SNOWMOBILE & UTV PRIMARY COMPRESSION TOOL 5/8"-18 (SOLD SEPARATELY)	1
29	HIGHLIGHTED IS USED	CONVERSION PIN OPTIONS (Below)	4
	1001321	CAM ARM PIN CONV. 5/16" FIXED PIN FOR .470 WIDE WEIGHT	
	1001319	CAM ARM PIN CONV. 5/16" FIXED PIN FOR .570 WIDE WEIGHT	
	1001326	CAM ARM PIN CONVERSION 8MM YAMAHA PIN .570 WIDE WEIGHT	
	1001322	CAM ARM PIN CONV. 5/16" NON-FIXED PIN FOR .470 WIDE WEIGHT	
	1001320	CAM ARM PIN CONV. 5/16" NON-FIXED PIN FOR .570 WIDE WEIGHT	

****PLEASE VISIT WEBSITE FOR ITEM PRICING****

STM Powersports
(248) 673-8408

www.stmpowersports.com

7/13/23