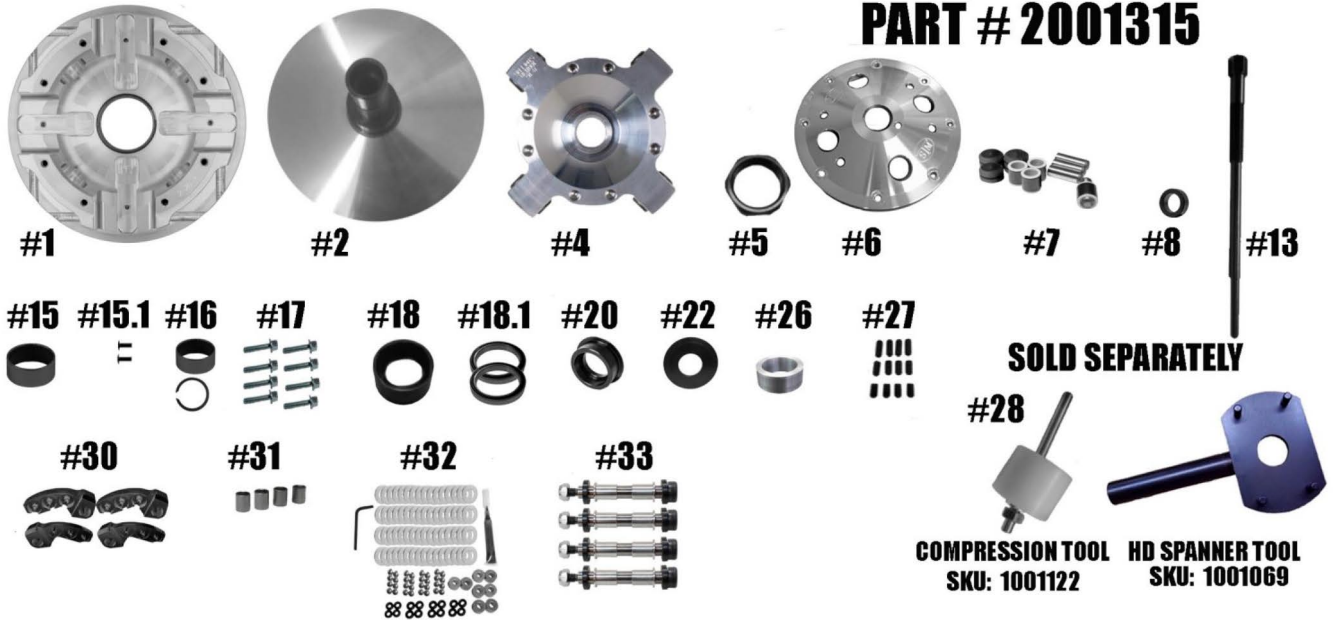


STM RAGE 4 POLARIS PRO R-SPORT/PREMIUM/ULTIMATE 4 CYL PRIMARY

PART # 2001315



ITEM #	PART #	DESCRIPTION	QTY	
1	2001303	RAGE 4 PRIMARY MOVABLE SHEAVE FOR PRO R	1	
2	2001302 / 2001301	PRO R FIXED SHEAVE AND POST ASSY	1	
4	1001138	RAGE 4 SCREW-ON HD SPIDER (Torque to 500 ft./lbs.)	1	
5	3001005	SPIDER NUT RAGE PRIMARY (Torque to 550 ft./lbs.)	1	
6	2001306	PRO R PRIMARY SPRING COVER	1	
7	1001651	COMPOSITE ROLLER-BUSHING STYLE PIN ROLLER KIT RAGE 4 & 8 SPIDER NON-WIDE	1	
8	2001307	PRO R PRIMARY CLUTCH RETAINING WASHER USED WITH OEM FACTORY BOLT	1	
13	1001348	PRIMARY PULLER 5/8-18	1	
15	4016	MOVABLE BUSHING RAGE 4 PRIMARY FOR PRO R	1	
15.1	8-32 X 1/4" BHCS	BUSHING RETAINING SCREWS (included with 4016)	2	
16	1816 / VH131	COVER BUSHING W/ RETAINING CLIP	1	
17	1001561	SNOWMOBILE PRIMARY 4 & 8 ARM COVER SCREW SET-3/4-20 x 1 1/4" (Torque to 125 in./lbs)	1	
18	2001304	2-WAY BEARING SLEEVE W/ BEARINGS FOR PRO R 2.5" DIA	1	
18.1	6809-2RS	2-WAY BEARING (included with 2001304)	2	
20	2001305	PRIMARY BEARING CAP	1	
22	1001663.120	SPIDER SHIM for HB & HBRN (Notched) STYLE CAM ARMS	1	
26	1001092-AL	Aluminum - Spring Spacer for PATV Style Springs for Pro "R" Rage Primary Clutches	1	
27	1001094	RAGE PRIMARY CAM ARM POSITIONING ADJUSTMENT SET SCREW SET	1	
28	1001122	RAGE SNOWMOBILE & UTV PRIMARY COMPRESSION TOOL 5/8"-18 (Sold Separately)	1	
30	50 GRAM BASE-1001585	OR 60 GRAM BASE- 1001584	CAM ARM-HB STYLE	4
OR	60 GRAM BASE .470 -1001631	OR 72 GRAM BASE .570- 1001632	CAM ARM HBRN (Notched) STYLE	
31	1001203	SUPERTIP CAM ARM BUSHINGS - .570 WIDE WEIGHT	4	
OR	1001200	SUPERTIP "R" & "P" SERIES CAM ARM BUSHINGS - .470 WIDE WEIGHT		
32	1001659	4 ARM NON-FIXED SUPERTIP TUNING FASTNER KIT	1	
33	HIGHLIGHTED IS USED	CONVERSION PIN OPTIONS	4	
	1001322	CAM ARM PIN CONVERSION 5/16" NON-FIXED PIN FOR .470 WIDE WEIGHT		
OR	1001320	CAM ARM PIN CONVERSION 5/16" NON-FIXED PIN FOR .570 WIDE WEIGHT		

****PLEASE VISIT WEBSITE FOR ITEM PRICING****

STM Powersports
(248) 673-8408

www.stmpowersports.com

6/30/2023