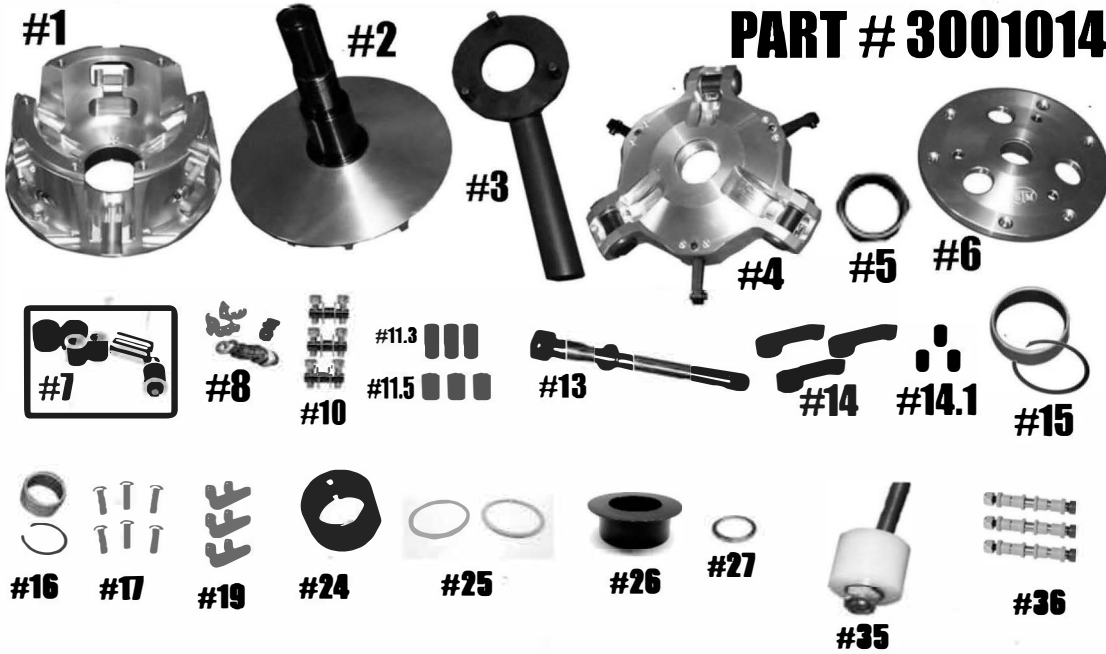


STM RAGE 6 CAN-AM PRIMARY INSTRUCTIONS

PART # 3001014



QTY	ITEM #	DESCRIPTION	PART #
1	1	RAGE 6 MOVABLE SHEAVE	3001008
1	2	FIXED SHEAVE AND POST	3001010/3001007
1	3	SPANNER TOOL (Sold separately)	1001020
1	4	SPIDER (Torque to 500 ft/lbs)	1001267
1	5	SPIDER NUT (Torque to 550 ft/lbs)	3001005
1	6	COVER	4001021
1	7	COMPOSITE BUSHING SPIDER PIN-ROLLER KIT	1001546
1	8	1 ST STAGE FASTNER KIT	1001005
3	10	1 ST STAGE ARM PIN	1001023
1	11.3	MOVABLE ROLLER .312 (Set of 3)	1001025
1	11.5	MOVABLE ROLLER .500 (Set of 3)	1001026
1	13	CLUTCH BOLT AND LOCK WASHER	3001011
3	14	1 ST STAGE CAM ARM	1001024
3	14.1	1 ST STAGE CAM ARM BUSHING	1001330
1	15	MOVABLE BUSHING AND RETAINING CLIP	1001004
1	16	COVER BUSHING	1810.590
1	17	COVER SCREW SET	1001018
3	19	MOVABLE ROLLER PIN ASSEMBLY	1001028
1	24	2-WAY BEARING WITH SLEEVE	1001000
2	25	BEARING THRUST WASHER	1001019
1	26	BEARING RETAINER CAP	3001000
1	27	PRIMARY SPRING SPACER .125 SHIM	1001276
1	35	COMPRESSION TOOL M14-1.5 (Sold Separately)	1001043
3	36	CONVERSION PIN OPTIONS	ONLY ONE IS USED
		5/16" FIXED PIN .470 WIDE WEIGHT	1001321
		5/16" NON-FIXED PIN .470 WIDE WEIGHT	1001322
		¼" PIN .470 WIDE WEIGHT	1001323

**** Please visit website for item pricing ****