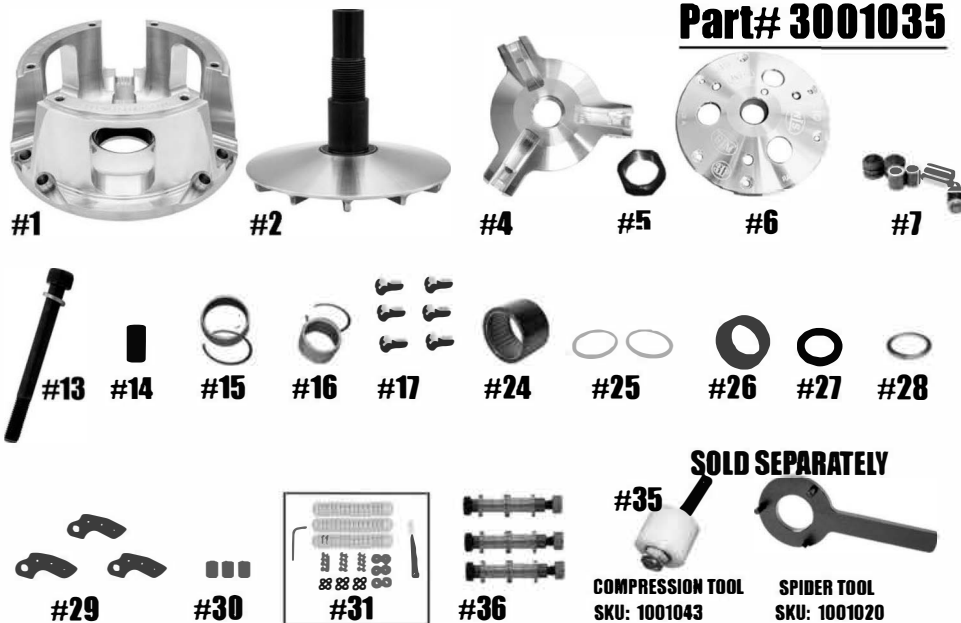


STM RAGE 3P CAN-AM PRIMARY

Part# 3001035



ITEM#	PART#	DESCRIPTION	QTY
1	3001003	ATV PRIMARY MOVABLE SHEAVE RAGE 3P/3S GEN 2	1
2	3001010/3001004	RAGE 3S/3P PRIMARY GEN 2 FIXED SHEAVE & POST ASSY	1
4	1001269	RAGE 3 ATV SPIDER (Torque to 500 ft/lbs.)	1
5	3001005	SPIDER NUT RAGE PRIMARY (Torque to 550 ft/lbs.)	1
6	3001032	ATV RAGE 3P COVER	1
7	1001546	COMPOSITE ROLLER-BUSHING STYLE PIN ROLLER KIT	1
13	3001011	PRIMARY CLUTCH BOLT M12x1.75X140MM SHCS W/LOCK WASHER (Torque to 80 ft/ lbs)	1
14	3001037	PRIMARY BOLT SLEEVE	1
15	1001004 / VH225	MOVABLE BUSHING w/RETAINING CLIP	1
16	1810.590 / VH131	COVER BUSHING w/RETAINING CLIP	1
17	1001018	ATV RAGE 3 & 6 PRIMARY COVER SCREW SET (Torque to 105 in/lbs.)	1
24	1001000	SLEEVED 2-WAY BEARING 47mm	1
25	1001019	ATV PRIMARY BEARING CUTCH THRUST WASHER	2
26	3001034	SLEEVED 2-WAY BEARING CAP	1
27	1001212	.075 THICK SPIDER SHIM	1
28	1001276	PRIMARY SPRING SPACER .125 SHIM	1
29	1001211	SUPERTIP ATV P-SERIES CAM ARM	3
30	1001200	SUPERTIP "R" & "P" SERIES CAM ARM BUSHING	1
31	1001660	3 ARM NON- FIXED SUPERTIP CAM ARM TUNING FASTENER KIT	1
35	1001043	RAGE ATV PRIMARY COMPRESSION TOOL M14x1.5 (SOLD SEPERATELY)	1
36	1001322	CAM ARM PIN CONVERSION 5/16" NON-FIXED PIN FOR .470 WIDE WEIGHT	3
NOT SHOWN	PATV	ATV PATV PRIMARY SPRING	1

***** Please visit website for item pricing *****

STM Powersports
(248) 673-8408

www.stmpowersports.com

7/13/2023