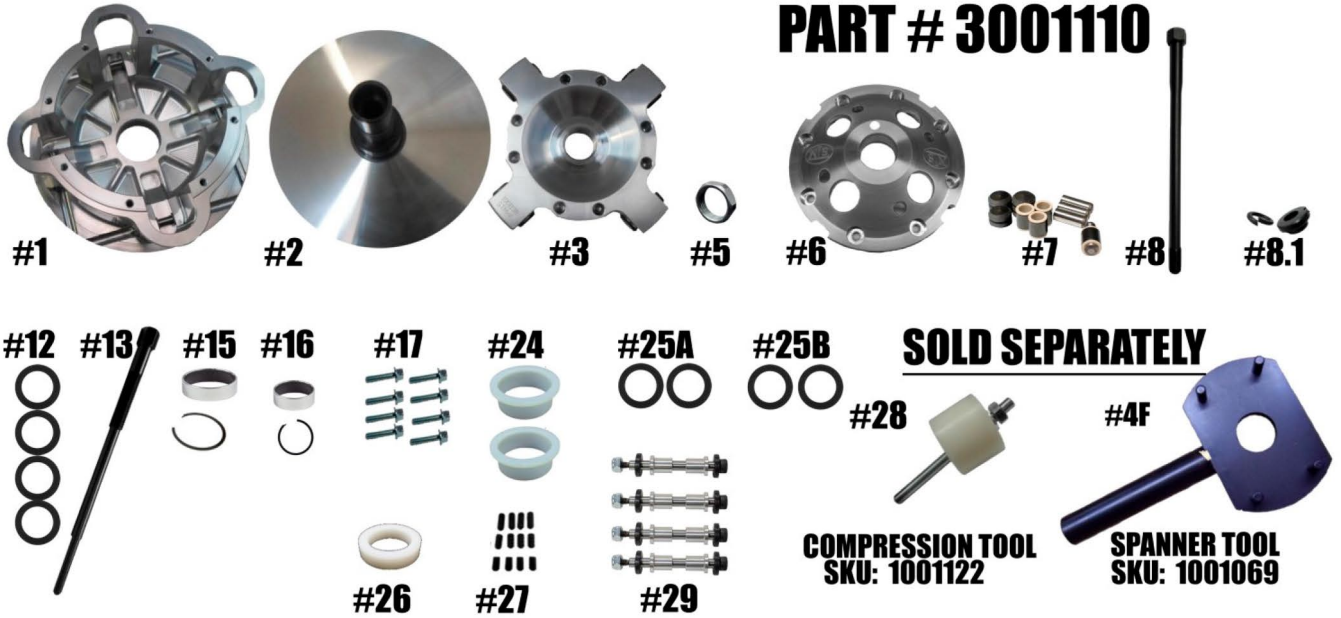


STM CAN-AM X3 RAGE 4 HD-DR

PART # 3001110



SOLD SEPARATELY

**COMPRESSION TOOL
SKU: 1001122**

**SPANNER TOOL
SKU: 1001069**

Check and make sure you have received all the components below before proceeding.

ITEM #	PART #	DESCRIPTION	QTY
1	3001114	RAGE 4 HD & PNEUMATIC MOVABLE SHEAVE	1
2	3001124	RAGE 4 HD FIXED SHEAVE AND POST ASSEMBLY	1
3	1001138	RAGE 4 SCREW-ON HD SPIDER (Torque to 500 ft./lbs.)	1
4F	1001069	RAGE 4 & 8 HD SPANNER TOOL (SOLD SEPARATELY)	1
5	3001005	SPIDER NUT RAGE PRIMARY (torque to 550 ft./lbs.)	1
6	1001037	RAGE 4 & 8 LONG BOSS HD PRIMARY CLUTCH COVER	1
7	1001651	COMPOSITE ROLLER-BUSHING STYLE PIN ROLLER KIT FOR RAGE 4 & 8 SPIDER NON-WIDE	1
8	1001549	PRIMARY RETAINING BOLT X3 "DR" & "DR-HD" MODELS (Torque to 85 ft./lbs.)	1
8.1	3001023	PRIMARY CLUTCH RETAINING WASHER. & LOCK WASHER FOR .750 POST END BORE	1
12	1001402	BELT SHIM .03 THICK FOR 1.875" DIA POST	4
13	1001347	PRIMARY CLLUTCH PULLER 5/8"-18x8.625"	1
15	3012.620 /VH225	MOVABLE BUSHING W/ RETAINING CLIP	1
16	1816 / VH131	COVER BUSHING W/ RETAINING CLIP	1
17	1001561	SNOIWMOBILE PRIMARY 4 & 8 ARM COVER SCREW SET (Torque to 125 in./lbs.)	1
24	1001091	TRA SPRING SPACER	2
25	C152994	SCREW-ON HD SPIDER SHIM .03 THICK FOR 1.875" DIAMETER POST	2
25B	C166597	SCREW-ON HD SPIDER SHIM .06 THICK FOR 1.875" DIAMETER POST	2
26	1001092	SPRING SPACER FOR PS STYLE SPRINGS FOR SCREW-ON RAGE PRIMARY CLUTCH	1
27	1001094	RAGE PRIMARY CAM ARM POSITIONING ADJUSTMENT SET SCREW SET	1
28	1001122	RAGE SNOWMOBILE & UTV COMPRESSION TOOL - 5/8"-18 (SOLD SEPARATELY)	1
29	HIGHLIGHTED IS USED	CAM ARM PIN CONVERSION OPTIONS	4
	1001321	5/16" FIXED PIN FOR .470 WIDE WEIGHT	
	1001319	5/16" FIXED PIN FOR .570 WIDE WEIGHT	
	1001326	8MM YAMAHA PIN FOR .570 WIDE WEIGHT	
	1001322	5/16" NON-FIXED PIN FOR .470 WIDE WEIGHT	
	1001320	5/16" NON-FIXED PIN FOR .570 WIDE WEIGHT	

****PLEASE VISIT WEBSITE FOR ITEM PRICING****

STM Powersports
(248) 673-8408

www.stmpowersports.com

7/28/2023