



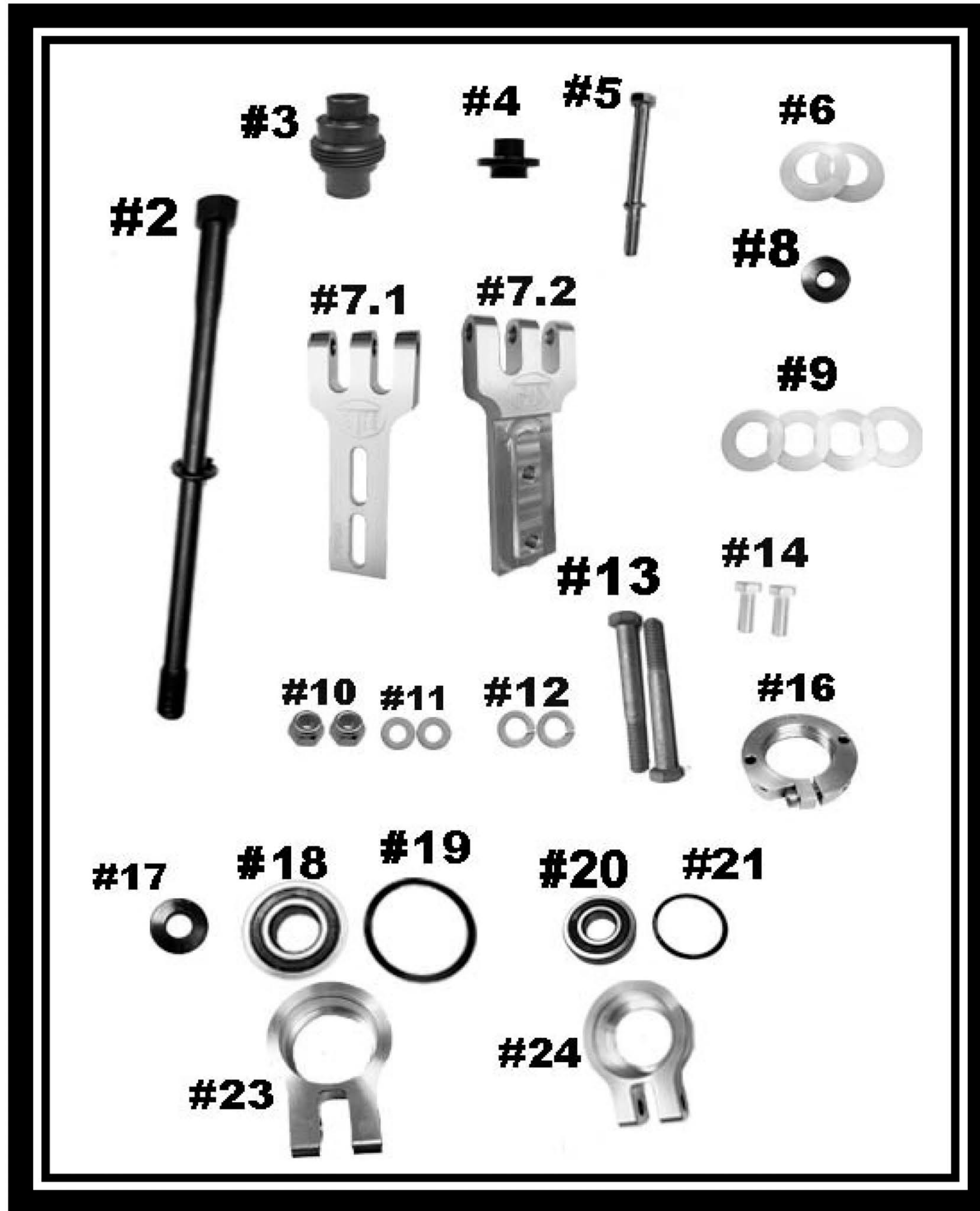
STM Powersports

Can-Am X3 DR, HDDR & WCP Applications

Part # 3001133

Can-Am Tied Clutch Brace

FOR DRAG RACING APPLICATIONS ONLY



STM Powersports

Can-Am X3 DR, HDDR & WCP Applications

Part # 3001133

FOR DRAG RACING APPLICATIONS ONLY

Item #	Quantity	Description		Part Number
			DR & HDDR Primary	WCP Primary
2	1	Primary Clutch Bolt & Lock Washer	2001165	7001005
3	1	Screw-On 30mm Adjuster Base		1001194
4	1	Secondary Bearing Post		3001083
5	1	Secondary Retaining Bolt & Lock Washer		M10-1.5x110mm HHCS
6	2	.030 Shim		1001173
7.1	1	10.5" Center to Center Lower Bracket		1001484
7.2	1	10.5" Center to Center Upper Bracket		1001485
8	1	Secondary Retaining Washer		1001219
9	4	.060 Shim		1001172
10	2	Flanged Nyloc Nut for Bracket Adjustment		3/8-16-NYLOCNUT
11	2	3/8" Flat Washer		3/8FW
12	2	3/8" Lock Washer		3/8LW
13	2	Bracket to Bearing Carrier Bolt		3/8-16x3
14	2	Bracket Length Adjustment Bolt		3/8-16x1" HHCS
16	1	Belt Spacing Adjuster Nut		1001171
17	1	Primary Bolt Retaining Washer		1001180
18	1	Primary Post Bearing		1001469
19	1	Primary Post Bearing Retaining Snap Ring		91985A251
20	1	Secondary Post Bearing		1001470
21	1	Secondary Post Bearing Retaining Snap Ring		91985A231
23	1	Primary Post Bearing Carrier		1001159
24	1	Secondary Post Bearing Carrier		1001160

DISCLAIMER:

This is an aftermarket performance product. It is the consumer's responsibility to read and follow the appropriate procedures listed for using this product. Consumer accepts all consequences by not following the above procedures. STM is not liable for any personal or property damage caused by this product.



IMPORTANT READ BEFORE INSTALLING WARNING:

The high-performance products you purchased are not for installation or operation by "Consumers", as defined by Magnuson-Moss Warranty Act. Do not install any performance parts or services unless you have the technical ability to properly set-up the entire machine to compensate for the installation of those parts. References in most of our literature to "bolt-on-parts" only indicate the parts are removable from the engine (as opposed to porting or machining type modifications). It is not meant to imply that the parts can be installed without additional modifications. The necessary work and expertise needed to install different products varies. Instructions, where provided, are given to assist in installation only; they are NOT a substitute for mechanical experience in setting up racing snowmobiles, watercraft or land-based vehicles. References to performance gains, reliability, ease of installation, etc. are based on our, and outside customer's experiences. This is NOT a guarantee of similar performance in very installation. While we sell proven hardware, in the end it is up to the individual racer to make the most of that hardware in his/her application.

STM Powersports
(248) 673-8408

www.stmpowersports.com

9/24/2021

STM Powersports
(248) 673-8408

www.stmpowersports.com

9/24/2021