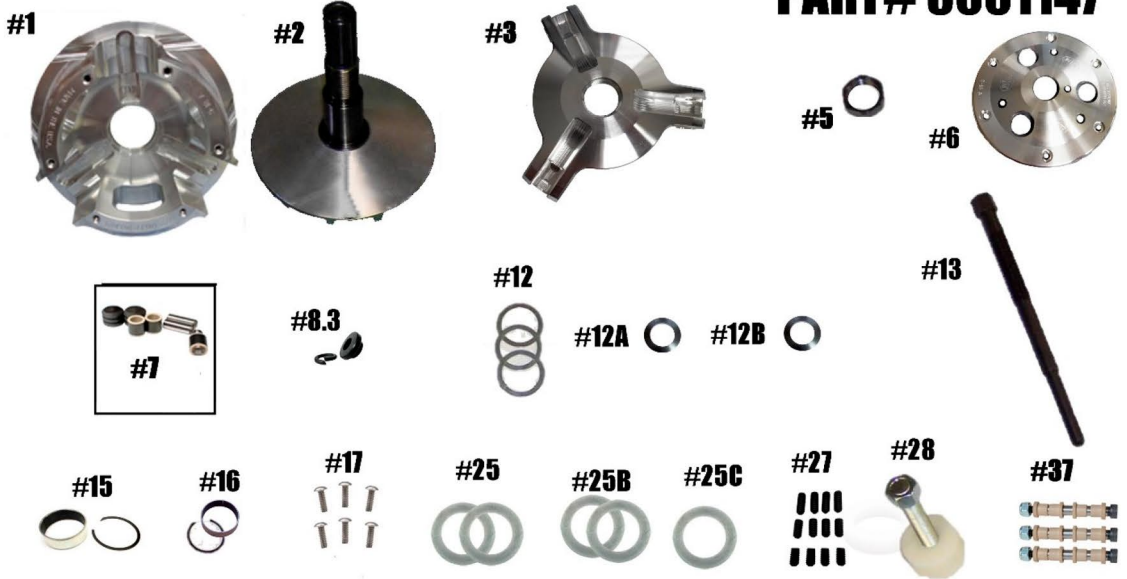


STM RAGE 3WSP-ER CAN-AM X3 PRIMARY

PART# 3001147



QTY	ITEM#	DESCRIPTION	PART #
1	1	RAGE 3 WSP MOVABLE SHEAVE	3001145
1	2	FIXED SHEAVE AND POST ASSY	1001336/3001146
1	3	RAGE 3 WIDE SPIDER (Torque to 500 ft/lbs)	1001572
1	5	SPIDER NUT (Torque to 550 ft/lbs)	3001005
1	6	RAGE 3 WIDE PRIMARY COVER	1001571
1	7	COMPOSITE ROLLER-BUSHING STYLE PIN-ROLLER KIT RAGE 3 WIDE	1001642
1	8.3	PRIMARY BOLT RETAINING WASHER	3001023
3	12	.03 BELT SHIM	1001402
1	12A	.04 BELT SHIM	1001527-04
1	12B	.110 BELT SHIM	1001527-110
1	13	PRIMARY CLUTCH PULLER 5/8-18x8.625	1001347
1	15	MOVABLE BUSHING & RETAINING CLIP	1001004 / VH225
1	16	COVER BUSHING & RETAINING CLIP	1810 / VH131
1	17	COVER SCREW SET (Torque to 105 in/lbs)	1001018
2	25	.03 SPIDER SHIM	C152994
2	25B	.06 SPIDER SHIM	C166597
1	25C	.075 SPIDER SHIM	1001212
1	27	CAM ARM POSITIONING ADJUSTMENT SCREW SET	1001094
1	28	COMPRESSION TOOL (5/8-18) SOLD SEPARATELY	1001122
3	37	CONVERSION PIN KIT OPTIONS BELOW	HIGHLIGHTED IS USED
		5/16" FIXED PIN .470 WIDE WEIGHT	1001605
		5/16" NON-FIXED PIN .470 WIDE WEIGHT	1001606
		5/16" FIXED PIN .570 WIDE WEIGHT	1001604
		5/16" NON-FIXED PIN .570 WIDE WEIGHT	1001574

***** Please visit website for item pricing *****

It's important to completely read the directions before installing the clutch!

STM Powersports
(248) 673-8408

www.stmpowersports.com

7/20/2023