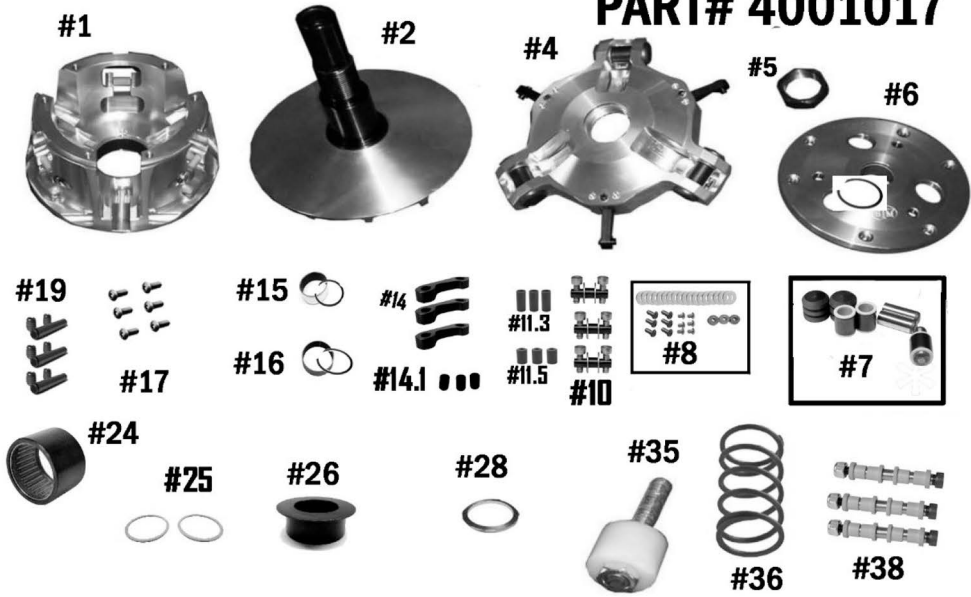




STM RAGE 6 WILDCAT-X INSTRUCTIONS



PART# 4001017



QTY	ITEM#	DESCRIPTION	PART#
1	1	RAGE 6 MOVABLE SHEAVE	4001007
1	2	FIXED SHEAVE AND POST (LEFT-HAND THREAD) ASSY	4001006 / 4001005
1	4	SPIDER (LEFT-HAND THREAD) (Torque to 500 ft/lbs.)	1001012
1	5	SPIDER NUT (LEFT-HAND THREAD) (Torque to 550 ft/lbs.)	1001044
1	6	RAGE 3 & 6 PRIMARY COVER	4001021
1	7	COMPOSITE ROLLER BUSHING STYLE PIN-ROLLER KIT	1001546
1	8	1 ST STAGE FASTNER KIT	1001005
3	10	1 ST STAGE ARM PIN	1001023
1	11.3	MOVABLE ROLLER .312 SET (3)	1001025
1	11.5	MOVABLE ROLLER .500 SET (3)	1001026
3	14	1 ST STAGE CAM ARM	1001024
3	14.1	1 ST STAGE CAM ARM BUSHING	1001330
1	15	MOVABLE BUSHING w/ SNAP RING	1001004/VH225
1	16	COVER BUSHING w/ SNAP RING	1810.590/VH131
1	17	COVER SCREW SET	1001018
3	19	MOVABLE ROLLER PIN ASSY	1001028
1	24	2-WAY BEARING 47MM	1001000
2	25	BEARING THRUST WASHER	1001019
1	26	BEARING RETAINER CAP	2001000
1	28	PRIMARY SPRING SPACER .125 SHIM	1001276
1	35	COMPRESSION TOOL M14 x 1.5	1001043
1	36	PATV STYLE PRIMARY SPRING	PER APPLICATION
3	38	CONVERSION PIN-5/16" FIXED PIN .470 WIDE WEIGHT	1001321
	OR	CONVERSION PIN- 1/4" DIA PIN .470 WIDE WEIGHT	1001323

*** * * Please visit website for item pricing * * ***

STM Powersports
(248) 673-8408

www.stmpowersports.com

3/18/2021